



Red Devil

Building, Repair & Finishing Solutions Experts

**WE ARE AN AMERICAN FAMILY-OWNED
BUSINESS BRINGING INNOVATION TO YOU!**

OUR HISTORY: Founded as Smith & Hemenway Company, Inc. in 1872 in Hill, New Hampshire, our place in hardware history was established with production of several types of glasscutters, including the patented "Woodward Wizard." This unique tool, with its tiny wheel for scoring glass, was among the first in the industry that could be used as a glass breaker, can opener, corkscrew, knife/scissor sharpener, and tack hammer. Because of the "Woodward Wizard" and other unique and dependable tools, our reputation for quality and reliability grew. During a buying trip to Sweden, the company's founder, Landon P. Smith, heard a blacksmith remark "those little red devils" after sparks from a forge singed his arm. The name stuck in Smith's mind and upon his return to the States, he began to label many of the tools he sold with the Red Devil® trade name. By the late 19th century, do-it-yourselfers, as well as professionals, were depending on our top-performing products.



In the early 1900s, the Red Devil® name became synonymous with quality tools for professional and DIY projects. In 1932, George L. Lee, Sr. acquired the Vesco Tools Company's line of wood scrapers - the first of nearly three dozen acquisitions designed to expand and improve the Red Devil® line. These acquisitions included complimentary lines of painters' tools, including wall scrapers, putty knives, glaziers' diamond points, and automatic point drivers. Throughout the years, Red Devil® continued to provide new alternatives for age-old problems, developing many innovative products like the ERGO 2000™ PRO putty knife and scraper line, one of the first on the market designed with ergonomic grip handles. In 1963, under the direction of George L. Lee, Jr., Red Devil® acquired the Schalk Chemical Company adding a line of adhesives, cleaners, and sealants to its growing family of products. This chemical line would become a major contributor to our business and lead us to pioneer innovative, new products such as ONETIME® Lightweight Spackling, the first lightweight spackling on the market and LIFETIME® Adhesive Sealant, the first siliconized acrylic sealant guaranteed to last as long as you own your home.



TODAY, WE BUILD AMERICA'S MOST ASKED FOR TOOLS AND CHEMICAL PRODUCTS: Red Devil®, Inc. is still a privately owned, family business with state-of-the-art manufacturing facilities in Pryor, Oklahoma. We're the only manufacturer to offer such a broad and diversified line of hand tools and chemical products for professional and home maintenance and improvement - more than 400 different products in all. In addition to producing caulks, sealants and tools under our own brand name, we also manufacture private label products for some of the nation's largest hardware and home center chains. We are still building on our reputation for quality, dependability, and innovation - guaranteeing that America's latest generation of professional contractors and do-it-yourselfers will continue to depend on Red Devil® products.

The Red Devil® Promise:

To provide high value, excellent quality solutions for your building and repair needs in a flexible and accommodating way.

Customer Service

Please call our Customer Service Department for order placement, deliveries, billing inquiries and authorization to return materials.

Toll Free: 1.800.4A.DEVIL

(1.800.423.3845)

Phone: 918.825.5744

Fax: 918.825.5761

E-mail: info@reddevil.com

Orders: purchaseorders@reddevil.com

Website: www.reddevil.com

Manufacturing Facility

Red Devil, Inc.

4175 Webb Street

Pryor, OK 74361

Corporate Office

Red Devil, Inc.

1519 S. Boston Ave.

Tulsa, OK 74119

Phone: 918.585.8111

Fax: 918.585.8120

Minimum Quantities

All items will be shipped in full shelf-pack quantities only. Orders received for quantities other than the standard pack multiples will be increased to the next highest standard pack.

Supplemental Price Lists

For a copy of a current price list and conditions of sale, please contact your sales representative or the Customer Service Department.

Document Requests

To obtain a Safety Data Sheet or Technical Data Sheet for any Red Devil® product, please visit our website at www.reddevil.com or call the Customer Service Department.

Table of Contents - Chemicals

Patch & Repair	1-3
ONETIME® Lightweight Spackling Square & Round Tubs.....	1-2
ONETIME® PATCH & PRIME™ Lightweight Spackling Square Tub.....	1
Vinyl Spackling Compound Square & Round Tubs.....	1-2
Pre-Mixed Concrete Patch Square & Round Tubs.....	1-2
Pre-Mixed Stucco Patch.....	2
ONETIME® LIGHTEN UPTM Lightweight Spackling Square & Round Tubs.....	1-2
Crack Patch™ Premium Spackling.....	2
ONETIME® Repair Patches.....	3
ONETIME® Wall Shield.....	3
ONETIME® PATCH-A-WALL® Kit.....	3
Tile Products	4
Pre-Mixed Tile Grout.....	4
Tile Paste Adhesive.....	4
Window, Door & Trim/Painter's Caulk	5-8
Window & Door Siliconized Acrylic Caulk.....	5
STORMGUARD™.920 100% RTV Silicone.....	5
100% Silicone Sealant.....	6
LIFETIME® Window, Door & Trim Advanced Sealant Plus Silicone.....	6
LIFETIME® Ultra 230 Premium Acrylic Latex Sealant.....	6
SPEED DEMON® Acrylic Caulk.....	7
QUICKPAINT® Caulk.....	7
Painter's Caulk.....	7
Painter's Plus.....	7
Paintable Silicone.....	7
CREATE-A-COLOR® Caulk, Kit & Mixers.....	8
Kitchen & Bath	9-10
SILICONE SHIELD™ Kitchen & Bath Sealant.....	9
Kitchen & Bath STAIN BLOCK™ Sealant.....	9
Kitchen & Bath Low-Odor Silicone Sealant.....	10
Kitchen & Bath Siliconized Acrylic Caulk.....	10
Caulk Strips.....	10
Specialty Products	11-14
Masonry & Concrete Repair Sealant.....	11
Blacktop & Roof Repair Sealant.....	11
Asphalt Crack Filler.....	11
Gutter & Foundation Sealant.....	11
Fireplace & Stove Repair.....	11
Polyurethane Sealants.....	12
Clear Caulk High Performance Adhesive.....	12
Glazing Compound.....	12
ZIP-A-WAY® Removable Sealant.....	12
RD3000™.....	13
House & Home Restore.....	14
Industrial & Commercial Products	15-19
RDI.....	15-16
Non-Combustible SMOKEBLOCK™.....	16
Firestop Sealant.....	16
Strong Bond Heavy-Duty Adhesive.....	16
QUICK GRIP™ Construction Adhesive.....	16
General Purpose Construction Adhesive.....	16
Duct Sealants.....	17
Multi-Purpose Spray Tack™.....	17
Water-Based Sprayable Insulation Adhesive.....	17
Foam & Fill® Polyurethane Foam Sealants.....	18-19
Foam & Fill® Polyurethane Gun Foam Sealants.....	19
Foam / Gun Cleaner.....	19
Professional Foam Dispensing Gun.....	19

Table of Contents - Tools

Putty Knives, Wall Scrapers & Taping Knives	21-26
EZ GRIP™ 6200 Professional Series.....	21-22
4100 Industrial / Professional Series.....	23
4200 Professional Series.....	24
4800 D.I.Y. Series.....	25
4700 Economy Series.....	26
Wood & Paint Scrapers	27-30
Carbide Wood Scrapers & Blades.....	27
Multi-Edge High-Carbon Steel Scrapers & Blades.....	27
TUF-Job Scrapers.....	27
Plastic Scraper & Blades.....	28
Pole Scrapers.....	28
Wire & Stripping Brushes.....	29-30
Paint & Finishing Tools	31-37
CAULK DEVIL® Smoother & Remover.....	31
Caulk Finishing Tool.....	31
Paint Mixers.....	31
3 Pack Caulking Tube Extension.....	31
SSK Sealant Smoothing Kit.....	31
Cartridge Cap.....	32
5 Gallon Pail Opener.....	32
Paint Can Hook.....	32
Plastic Drop Cloth.....	32
Graining Tool.....	32
Chip Brushes & Roller Cleaner.....	32
Caulk Guns.....	33-34
Trim Guards.....	35
Pry Bars.....	35
Steel Wool.....	36
Sanding Tools.....	37
Glazier Tools & Glass Scrapers	38-40
Dual-Purpose Window Tool.....	38
Glass Cutters.....	38
PLEXIGLAS® Scoring Tool.....	38
Glazing Points.....	38
Glass Scrapers & Blades.....	39-40
Window Scrapers & Blades.....	39-40
Specialty & Utility Knives	41-42
Adjustable & Heavy-Duty Utility Knives.....	41
TUF-KUT™ Auto-Load Utility Knife.....	41
Utility Knives with Breakaway Blades.....	41-42
Razor Knife.....	42
Box Cutter.....	42
Drywall & Wallcovering Tools	43-44
Batting & Taping Knives.....	43
HVAC Tape.....	43
Plastic Mud Pan.....	43
Angled Wallpaper Strippers & Blades.....	44
Combination Wallcovering Tool.....	44
Flooring Tools	45-48
Trowels & Spreaders.....	45-47
Flooring Knife.....	47
Utility Patcher.....	47
Tool Handle Wedges.....	47
SLAMSCRAPER® Impact Tool & Blades.....	48
Heavy-Duty Scrapers & Blades.....	48

Patch & Repair

SQUARE TUBS

Red Devil's® unique square tubs are not only designed to save space, but also contoured to work with a putty knife for easy use.

ONETIME® LIGHTWEIGHT SPACKLING

This pre-mixed, lightweight formula allows professional repairs of dents, cracks, and holes in a variety of substrates to be completed in just one application.

- Covers in One Application & Paintable in Minutes
- Won't Shrink, Crack or Sag
- Smooth Finish with No Sanding Required
- Dries Quickly



- 0541SQ - 1 Gallon (3.79 liter)
- 0542SQ - 1/2 Pint (236 mL)
- 0544SQ - 1 Quart (.95 liter)
- 0548SQ - 1 Pint (473 mL)



ONETIME® LIGHTWEIGHT SPACKLING 4 PC. KIT

This all-in-one four-piece kit comes with everything needed to conveniently complete a spackling project. It includes a quart of spackling and three components contained in the lid; an aluminum wall patch, sandpaper, and a spreader.

- Covers in One Application & Paintable in Minutes
- Won't Shrink, Crack or Sag
- Smooth Finish with No Sanding Required
- Dries Quickly
- Convenient Kit



- 0544KT - 1 Quart (.95 liter)



ONETIME® LIGHTEN UP™ LIGHTWEIGHT SPACKLING

This lightweight, color-changing product goes on pink but dries white when it's time to paint. The pre-mixed formula allows for professional repairs of dents, cracks, and holes in a variety of substrates to be completed in just one application.

- Covers in One Application
- Paint-Ready Indication
- Won't Shrink, Crack or Sag
- Smooth Finish with No Sanding Required

- 0572SQ - 1/2 Pint (236 mL)
- 0574SQ - 1 Quart (.95 liter)



VINYL SPACKLING COMPOUND

This water-based product is specially formulated for easy application, paintability, and sanding allowing users to quickly patch holes and nail heads in a variety of substrates.

- Paintable
- Dries Quickly
- Sands Easily

- 0531SQ - 1 Gallon (3.79 liter)
- 0532SQ - 1/2 Pint (236 mL)
- 0534SQ - 1 Quart (.95 liter)
- 0538SQ - 1 Pint (473 mL)



ONETIME® PATCH & PRIME™ LIGHTWEIGHT SPACKLING

This lightweight, pre-mixed formula saves time with no need to prime or sand before painting. It allows professional repairs of dents, cracks, and holes in a variety of substrates to be completed in just one application.

- Patch & Prime in One Easy Step
- Covers in One Application & Paintable in Minutes
- Smooth Finish with No Sanding Required
- Won't Shrink, Crack or Sag
- Dries Quickly

- 0540 - 1 Pint (473 mL)



PRE-MIXED CONCRETE PATCH

This pre-mixed, ready-to-use concrete patch repairs holes, cracks, breaks and other imperfections in concrete or masonry surfaces without shrinking or cracking. It is not recommended for areas subject to vehicular traffic.

- Retains Maximum Flexibility
- Dries a Concrete Color
- Paintable

- 0644SQ - 1 Quart (.95 liter)



ROUND TUBS

Red Devil's® quality line of patch and repair products are the solution to hundreds of interior and exterior repair jobs. These products can be used to fill dents, cracks or holes in various substrates or to texturize paint to hide minor flaws.

ONETIME® LIGHTWEIGHT SPACKLING

This pre-mixed, lightweight formula allows professional repairs of dents, cracks, and holes in a variety of substrates to be completed in just one application.

- Covers in One Application & Paintable in Minutes
- Won't Shrink, Crack or Sag
- Smooth Finish with No Sanding Required
- Dries Quickly



- 0541 - 1 Gallon (3.79 liter)
- 0542 - 1/2 Pint (236 mL)
- 0544 - 1 Quart (.95 liter)
- 0545 - 6 Fl. Oz. (177 mL)
- 0548 - 1 Pint (473 mL)



ONETIME® LIGHTEN UP™ LIGHTWEIGHT SPACKLING

This lightweight, color-changing product goes on pink but dries white when it's time to paint. The pre-mixed formula allows for professional repairs of dents, cracks, and holes in a variety of substrates to be completed in just one application.

- Covers in One Application
- Paint-Ready Indication
- Won't Shrink, Crack or Sag
- Smooth Finish with No Sanding Required

- 0572 - 1/2 Pint (236 mL)
- 0574 - 1 Quart (.95 liter)



CRACK PATCH™ PREMIUM SPACKLING

This product provides superior performance for filling dents, holes, and cracks in a variety of substrates for wall and ceiling repairs. It is formulated for easy coverage, quick-drying and will not shrink, crumble or flake when used as directed.

- Excellent Sanding When Fully Cured
- Dries Quickly

- 0802 - 1/2 Pint (236 mL)
- 0804 - 1 Quart (.95 liter)
- 0805 - 5.5 Fl. Oz. (163 mL)



PRE-MIXED STUCCO PATCH

A premium ready and easy-to-use acrylic-based textured stucco patch, formulated to repair small holes, spalls, and cracks in stucco surfaces that cures to a tough and durable finish.

- Paintable when Cured
- Won't Shrink, Crack or Sag
- Textured Finish
- Fast Set-Time

- 0450 - 1 Quart (.95 liter)



PRE-MIXED CONCRETE PATCH

This pre-mixed, ready-to-use concrete patch repairs holes, cracks, breaks and other imperfections in concrete or masonry surfaces without shrinking or cracking. It is not recommended for areas subject to vehicular traffic.

- Retains Maximum Flexibility
- Paintable
- Dries a Concrete Color

- 0641 - 1 Gallon (3.79 liter)
- 0644 - 1 Quart (.95 liter)
- 0645 - 5.5 Fl. Oz. (163 mL)



VINYL SPACKLING COMPOUND

This water-based product is specially formulated for easy application, paintability, and sanding allowing users to quickly patch holes and nail heads in a variety of substrates.

- Paintable
- Dries Quickly
- Sands Easily

- 0531 - 1 Gallon (3.79 liter)
- 0532 - 1/2 Pint (236 mL)
- 0534 - 1 Quart (.95 liter)
- 0538 - 1 Pint (473 mL)
- 0615 - 5.5 Fl. Oz. (163 mL)



WALL REPAIR PATCHES

Red Devil's® wall repair patches offer a professional solution for your wall repair needs.

ONETIME® Multi-Surface Repair Patch 2 PACK

Permanently repair electrical outlets and walls using these self-adhesive patches. Easily patch damaged areas up to 6" (15.2 cm) and cover with ONETIME® Lightweight Spackling for quick and professional results.

- Compound Permeates Patch for a Durable Repair
- Ultra-Thin for Easier Blending to Existing Surface
- Easy Application on Angles, Corners & Curves



1227 - 7" X 7"



ONETIME® FIBER MESH CRACK PATCH

Permanently repair holes & cracks in drywall or plaster surfaces easily with this wall repair fabric product. Easily patch damaged areas and cover with ONETIME® Lightweight Spackling for quick and professional results.

- Self-Adhesive for Easy Application
- Provides Reinforcement
- Cut to Fit Versatility



1224 - 36" x 75'

1226 - 6" x 75'

1228 - 2.5" x 20'



ONETIME® WALL REPAIR PATCH

Make permanent repairs to walls and ceilings with this self-adhesive metal repair patch. Easily patch damaged areas and cover with ONETIME® Lightweight Spackling for quick and professional results.

- Self-Adhesive
- Easy Application
- Rust Proof, Galvanized Steel

1214 - 4" X 4" Metal Patch
1216 - 6" X 6" Metal Patch
1218 - 8" X 8" Metal Patch



ONETIME® WALL SHIELD

Protect or repair your walls from damage caused by doorknob impact with this self-adhesive wall shield.



1222 - Wall Shield

PATCH-A-WALL™ KIT

These all-in-one repair kits contain everything needed to conveniently repair walls.

- Plastic Putty Knife
- 1/2 Pt. ONETIME® Lightweight Spackling
- Sandpaper
- 6" Self-Adhesive Patch

0549



- Plastic Putty Knife
- 1/2 Pt. ONETIME® Lighten Up™ Spackling
- Sandpaper
- 6" Self-Adhesive Patch

0579



Tile Products

PRE-MIXED TILE GROUT

This water-resistant grout compound provides professional quality on ceramic and mosaic tile projects with do-it-yourself ease. It is formulated with premium acrylic latex for a user-friendly consistency and improved durability.

- Water-Resistant
- Mildew Resistant When Cured
- Excellent Adhesion & Durability



0422 - 1/2 Pint (236 mL) - White

042260 - 1/2 Pint (236 mL) - Black

0424 - 1 Quart (.95 liter) - White

0425 - 5.5 Fl. Oz. (163 mL) - White

0428 - 1 Pint (473 mL) - White



TILE PASTE ADHESIVE

This acrylic and water-based adhesive creates a permanent bond for a durable tile installation or repair project. Use this on floor or walls to easily adhere mosaic, plastic & ceramic tile, cove base and linoleum to ceramic, plastic, metal, vinyl, rubber or linoleum.

- Easy Application & Tooling
- Ideal Paste Consistency
- Excellent Adhesion to Many Tiles
- Cured Adhesive is Mildew Resistant
- Troweling Not Usually Necessary



0497 - 5.5 Fl. Oz. (163 mL)



Window, Door & Trim/Painter's Caulk

WINDOW & DOOR SILICONIZED ACRYLIC CAULK

This advanced silicized acrylic sealant helps to increase energy efficiency by reducing drafts and cold spots while providing a barrier to the entry of dirt and insects. It has excellent adhesion to most surfaces and can be used on a variety of substrates.

- Cured Sealant is Mildew Resistant
- Paintable

- 0846 - 10.1 Fl. Oz. (300 mL) - White
- 084620 - 10.1 Fl. Oz. (300 mL) - Almond
- 084630 - 10.1 Fl. Oz. (300 mL) - Cedar
- 084640 - 10.1 Fl. Oz. (300 mL) - Dk. Brown
- 084650 - 10.1 Fl. Oz. (300 mL) - Gray
- 084660 - 10.1 Fl. Oz. (300 mL) - Black
- 0876 - 10.1 Fl. Oz. (300 mL) - Clear

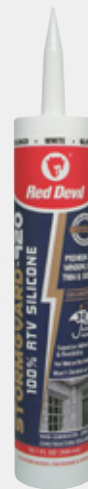


STORMGUARD™-920 100% RTV SILICONE

This premium RTV silicone sealant forms a permanent rain-resistant seal within 30 minutes. It offers excellent durability and exceeds the highest test method for joint expansion on a variety of surfaces.

- Rain Resistant in 30 minutes
- Superior Adhesion & Flexibility
- Use on Wet or Dry Surfaces
- Non-corrosive & Will Not Crack, Shrink or Peel

- 0780 - 10.1 Fl. Oz. (300 mL) - White
- 078040 - 10.1 Fl. Oz. (300 mL) - Brown
- 078050 - 10.1 Fl. Oz. (300 mL) - Gray
- 078060 - 10.1 Fl. Oz. (300 mL) - Black
- 0785 - 2.8 Fl. Oz. (83 mL) - White
- 0787 - 10.1 Fl. Oz. (300 mL) - Clear
- 0795 - 2.8 Fl. Oz. (83 mL) - Clear



Meets or exceeds ASTM C920 Class 25 requirements.

STORMGUARD™-920 100% RTV SILICONE

- 30 MINUTE RAIN READY!
- SUPERIOR ADHESION & FLEXIBILITY
- WON'T SHRINK OR CRACK
- FOR WET OR DRY SURFACES
- NON-CORROSIVE
- LIFETIME GUARANTEE
- LOW ODOR



Available Colors:



100% SILICONE SEALANT

This superior quality, multi-purpose sealant provides a long-lasting, weather-resistant seal to glass, metal, plastic and ceramic surfaces. It offers excellent adhesion, flexibility, and durability without cracking, shrinking or peeling.

- Can Be Applied at Temperatures Below Freezing
- Forms a Water-Resistant Seal
- Maximum Flexibility & Excellent Adhesion

- 0810 - 2.8 Fl. Oz. (83 mL) - White
- 0816 - 9.8 Fl. Oz. (290 mL) - White
- 081640 - 9.8 Fl. Oz. (290 mL) - Bronze
- 081650 - 9.8 Fl. Oz. (290 mL) - Gray
- 081660 - 9.8 Fl. Oz. (290 mL) - Black
- 0820 - 2.8 Fl. Oz. (83 mL) - Clear
- 0826 - 9.8 Fl. Oz. (290 mL) - Clear



Meets or exceeds performance requirements of Fed. Spec. TT-S-00230C, TT-S 001543A, ASTM C920 Class 25. Appropriate for use in federally inspected meat and poultry plants.

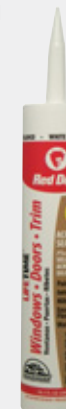


LIFETIME® WINDOW, DOOR & TRIM ADVANCED SEALANT PLUS SILICONE

This high performance, multi-purpose caulk is formulated to last for the lifetime of your home. It includes HomeShield™ Antimicrobial Protection to ensure against the worst types of mold and mildew.

- Excellent Paintability
- Maximum Adhesion to a Variety of Substrates
- Mold & Mildew Resistant When Cured

- 0856PR - 10.1 Fl. Oz. (300 mL) - White
- 0866PR - 10.1 Fl. Oz. (300 mL) - Clear



Meets ASTM C920 Class 12.5 requirements.

LIFETIME® Ultra 230

LIFETIME® Ultra 230 Premium Acrylic Latex Sealant is a high performance, multi-purpose sealant formulated to last for the lifetime of your home. This unique formulation provides the maximum level of durability on a variety of substrates indoors or outdoors. It offers excellent paintability and includes HomeShield™ Antimicrobial Protection to ensure against the worst types of mold and mildew. This sealant is available in many colors.

- 0705 - 5.5 Fl. Oz. (163 mL) - Clear
- 0770 - 10.1 Fl. Oz. (300 mL) - White
- 077010 - 10.1 Fl. Oz. (300 mL) - Cedar
- 077020 - 10.1 Fl. Oz. (300 mL) - Almond
- 077040 - 10.1 Fl. Oz. (300 mL) - Brown
- 077050 - 10.1 Fl. Oz. (300 mL) - Gray
- 077060 - 10.1 Fl. Oz. (300 mL) - Black
- 0775 - 5.5 Fl. Oz. (163 mL) - White
- 0777 - 10.1 Fl. Oz. (300 mL) - Clear

Meets Requirements of ASTM Spec230 Class A and ASTM C920 Performance



PAINTER'S CAULK

SPEED DEMON® ACRYLIC CAULK

This general-purpose, economical caulk applies easily and dries quickly. It can be used on masonry, painted and unpainted wood, and most siding.

- Paintable
- Multi-Surface Application

0736 - 10.1 Fl. Oz. (300 mL) - White



PAINTER'S PLUS

This premium grade siliconized acrylic caulk is formulated for use on a variety of interior and exterior applications. Designed to prevent paint cracking, won't shine through paint and is easily applied.

- Paintable in 30 Minutes

0766 - 10.1 Fl. Oz. (300 mL) - White



Meets or exceeds ASTM C834 requirements.

PAINTABLE SILICONE

Paintable Silicone Caulk is a premium sealant with a superior hybrid formulation. It provides the exceptional waterproof performance needed from a silicone sealant and its ease of use provides unmatched paintability. This 100% waterproof paintable silicone caulk sealant makes exterior projects and waterproofing a breeze. It can also be exposed to water or painted in no more than 30 minutes.

- Paintable & Waterproof in 30 Minutes
- All-Weather, Multi-Surface Application
- Withstands Active Joint Movement
- Mold & Mildew Resistant When Cured
- VOC Compliant

0985 - 9.0 Fl. Oz. (266 mL) - White



Meets or exceeds ASTM C834 requirements.

QUICKPAINT® ACRYLIC CAULK

Specially formulated for the professional paint contractor, this styrenated, siliconized, acrylic caulk is paintable in just 30 minutes! It is designed with higher solids to reduce shrinkage.

- Paintable in 30 Mins with No Paint Film Cracking
- Multi-Surface Application
- Cured Caulk is Mildew Resistant

0946 - 10.1 Fl. Oz. (300 mL) - White



PAINTER'S CAULK

This acrylic latex caulk is formulated for easy paintability. It provides tight, water-proof seals and can be used on most common construction surfaces.

- Paintable in 2 Hours (Takes All Types of Paint When Dry)
- Mildew Resistant When Cured

0746 - 10.1 Fl. Oz. (300 mL) - White



Exceeds the requirements of ASTM C834.



CREATE-A-COLOR®

The CREATE-A-COLOR® Caulk Coloring System is a simple and easy way to create custom-colored caulk in minutes. This innovative system allows on-the-job coloring of a single tube of caulk using ordinary latex paint. Watch the color change right before your eyes. The results are amazing!

This is a must-have system for painters, decorators, contractors, tile installers, masons, plumbers, wallpaper hangers, and even homeowners. CREATE-A-COLOR® allows you to match your caulk with fixtures, countertops, tile, walls, wallpaper and more.

CAULK MIXERS

These durable mixers are portable, convenient and simple to use. Clean them easily with soap and water after mixing your customized paint color. Each mixer includes a syringe for extracting paint and an easy-to-follow instruction guide.

4071 - Pro Caulk Mixer* Die-cast Aluminum



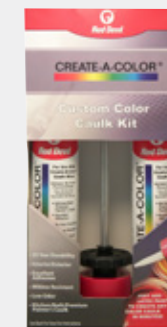
4070 - Standard Caulk Mixer* Sturdy Plastic



KIT INCLUDES:

- 2 Tubes of CREATE-A-COLOR® Caulk
- Standard Caulk Mixer
- Syringe

4074 - CREATE-A-COLOR® Kit



Paint must be purchased separately.



CREATE-A-COLOR® CAULK

Specially formulated to be tinted using a CREATE-A-COLOR® Caulk Mixer, this superior quality sealant offers excellent adhesion to most surfaces. Cured caulk is mildew resistant.

- Excellent Color Match After 24 Hours
- Ultra-Smooth, Satin Finish



0409 - 9.4 Fl. Oz. (278 mL)

SYRINGES

25 replacement syringes for CREATE-A-COLOR® Caulk System.

4072 - Bag of 25

*The CREATE-A-COLOR® Caulk Mixer is designed for use exclusively with CREATE-A-COLOR® Caulk from Red Devil®, Inc.



Kitchen & Bath

SILICONE SHIELD™ KITCHEN & BATH SEALANT

This premium, quality spec-compliant sealant is formulated for kitchen and bath applications and can be exposed to water in 1 hour.

- Mold & Mildew Resistant When Cured
- Permanent Flexibility & Excellent Adhesion to Many Surfaces
- Will Not Crack, Shrink or Peel

0816KB - 9.0 Fl. Oz. (266 mL) - White

0826KB - 9.0 Fl. Oz. (266 mL) - Clear



Meets or exceeds performance requirements of Fed. Spec. TT-S-00230C, TT-S 001543A, ASTM C920.



KITCHEN & BATH STAIN BLOCK™ SEALANT

This advanced sealant has a high gloss finish and is specially formulated with Stain Block™ to resist the toughest stains like red wine/grape juice, coffee, mustard, ketchup, and soy sauce without discoloring. It has an excellent bonding strength to a variety of substrates and seals like caulk but sticks like an adhesive when fully cured.

- Provides a Durable, Watertight Seal
- Excellent Adhesion
- Paintable with Latex & Oil-Based Paints
- Won't Shrink, Crack or Discolor
- Mold & Mildew Resistant When Cured
- High Gloss Finish

0750 - 10.1 Fl. Oz. (300 mL) - White

075022 - 10.1 Fl. Oz. (300 mL) - Biscuit

0755 - 5.5 Fl. Oz. (163 mL) - White

075522 - 5.5 Fl. Oz. (163 mL) - Biscuit

0757 - 10.1 Fl. Oz. (300 mL) - Clear

0765 - 5.5 Fl. Oz. (163 mL) - Clear



Meets ASTM C920 requirements.



KITCHEN & BATH LOW-ODOR SILICONE SEALANT

This advanced formula provides long-lasting flexibility, excellent adhesion and creates a protective barrier against moisture and mildew. Its watertight seal cures to an ultra-smooth, satin finish.

- Provides a Durable, Flexible, Watertight Seal
- Excellent Adhesion to Many Surfaces
- Won't Shrink, Crack or Peel
- Mildew Resistant When Cured

0836 - 10.1 Fl. Oz. (300 mL) - White

083620 - 10.1 Fl. Oz. (300 mL) - Almond

0883 - 2.8 Fl. Oz. (83 mL) - White

0885 - 2.8 Fl. Oz. (83 mL) - Clear

0887 - 10.1 Fl. Oz. (300 mL) - Clear



Meets or exceeds performance requirements of Fed. Spec. TT-S-00230C, TT-S-001543A, ASTM C920 and FDA Reg. No. 21 CFR 177, 2600 when fully cured. UL Recognized.



KITCHEN & BATH SILICONIZED ACRYLIC CAULK

This odorless, mildew-resistant formula is fortified with silicone to provide a long-lasting, watertight seal around tubs, showers, sinks, and fixtures. It cures to an ultra-smooth, satin finish that is mold and mildew resistant.

- Provides a Durable, Watertight Seal
- Excellent Adhesion to Many Surfaces
- Won't Shrink, Crack or Peel
- Mold & Mildew Resistant When Cured
- Paintable

0405 - 5.5 Fl. Oz. (163 mL) - White

040520 - 5.5 Fl. Oz. (163 mL) - Almond

0406 - 10.1 Fl. Oz. (300 mL) - White

040620 - 10.1 Fl. Oz. (300 mL) - Almond

0408 - 10.1 Fl. Oz. (300 mL) - Clear

0445 - 5.5 Fl. Oz. (163 mL) - Clear



Meets ASTM C834 requirements.

CAULK STRIPS

These self-adhesive decorative caulk strips are pre-shaped for fast and easy installation. They provide a long-lasting seal and give a finished, professional look to kitchen and bath areas. Best of all, these caulk strips are mildew resistant when cured and install in minutes – simply peel and press in place with no tools or messy cleanup!

Tub & Wall Caulk Strip

0150 - 7/8" x 11' - White

0151 - 1 5/8" x 11' - White



Tub & Floor Caulk Strip

For use between bathtub and floor.

0170 - 1 1/2" x 5' - White



Wall & Counter Caulk Strip

For use between walls and countertop.

0155 - 1" x 12' - White



Fixture Caulk Strip

For use around toilets, sinks and showers.

0152 - 1/2" x 6' - White



Specialty Products

MASONRY & CONCRETE REPAIR SEALANT

This acrylic compound is ideal for repairing and sealing cracks and joints in concrete, masonry stone, cinder block, and brick. The gray textured finish blends easily with masonry and provides excellent outdoor durability.

- Won't Stain or Bleed
- Excellent Adhesion
- Mildew Resistant When Cured
- Paintable

0646 - 10.1 Fl. Oz. (300 mL) - Gray



BLACKTOP & ROOF REPAIR SEALANT

This sealant provides a durable, flexible and weather-resistant seal for cracks and joints in asphalt driveways. It is also ideal for waterproofing, repairing and sealing roofs, shingles, and flashings around chimneys and skylights.

- Adheres to Wet or Dry Surfaces
- Forms an Extra-Tight, Water-Resistant Seal
- Stays Flexible

0636 - 10.1 Fl. Oz. (300 mL) - Black



GUTTER & FOUNDATION SEALANT

This tough, high-quality butyl rubber sealant is ideal for outdoor jobs requiring a durable, watertight seal. It is best used around concrete foundations, expansion joints, gutters, and in below-grade areas such as basements.

- Provides a Watertight Seal
- For Basements & Below-Grade Areas
- Remains Flexible & Paintable
- Cured Sealant is Mildew Resistant

0697 - 10.1 Fl. Oz. (300 mL) - White

0697AG - 10.1 Fl. Oz. (300 mL) - Gray



Meets or exceeds the following specifications: Fed. Spec. TT-S-001657, Type I; Fed. Spec. TT-C-1796A, Type I; TT-C-598C, Type I.



ASPHALT CRACK FILLER

This sealant provides a durable, flexible and weather-resistant seal for cracks and joints in asphalt driveways, parking lots and more. It provides excellent adhesion and prevents water and frost damage.

- Colored & Textured Like Asphalt
- Forms an Extra-Tight, Water-Resistant, Flexible Seal to Wet or Dry Surfaces
- Expands & Contracts for a Durable Repair
- Suitable for Below Grade Applications

0637 - 10.1 Fl. Oz. (300 mL) - Black



FIREPLACE & STOVE REPAIR

This silicate cement black, textured paste adheres well to fire brick, cinder block, metal, and mortar. It cures to a rock-hard finish with a warm fire and provides a durable, long-lasting seal that withstands temperatures up to 1000° F. For interior use only.

- Non-Flammable
- Withstands Temperatures Up to 1000°F
- Ideal for Patching Fire Bricks & Sealing Wood-Burning Stoves

0466 - 10.1 Fl. Oz. (300 mL) - Black



POLYURETHANE SEALANTS

WHITE PU-970

This professional-grade, high-performance polyurethane sealant is designed specifically for installing or repairing window and door frames. It provides superior adhesion to most building materials and is excellent for increasing energy efficiency.

- Forms a Weatherproof, Permanently Flexible Seal
- Fast Cure Time
- Paintable & Non-Staining
- Cured Sealant is Mildew Resistant

0970 - 10.1 Fl. Oz. (300 mL) - White



Meets requirements of Fed. Spec. TT-S-00230C Class A and ASTM C920 Class 25.



GRAY/LIMESTONE PU-970

This professional-grade, high-performance polyurethane sealant is designed to meet the flexibility requirements of actively moving joints. Specially textured to simulate concrete, it provides excellent weatherability, adhesion and a fast cure time with high bonding strength.

- Permanently Flexible & Excellent Adhesion on horizontal or vertical surfaces
- One Component
- Waterproof
- Paintable and Non-Staining

0972 - 10.1 Fl. Oz. (300 mL) - Gray/Limestone



Meets requirements of Fed. Spec. TT-S-00230C and ASTM C920.



BLACK PU-970

This professional-grade, high-performance polyurethane sealant provides a long-lasting seal with excellent adhesion. It has a strong resistance to deterioration caused by weathering and is ideal for asphalt and blacktop, shingles, vents, flashing, expansion joints, gutters, downspouts and skylights.

- Permanently Flexible & Excellent Adhesion
- Waterproof
- Paintable

0971 - 10.1 Fl. Oz. (300 mL) - Black



Meets requirements of Fed. Spec. TT-S-00230C and ASTM C920.



CLEAR CAULK HIGH PERFORMANCE ADHESIVE

This high-performance adhesive sealant applies and dries ultra-clear without yellowing, staining, cracking or separating once cured. It offers excellent adhesion to most surfaces in below-freezing temperatures both above and below grade.

- Superior Bond & Clarity to Virtually All Surfaces
- Cured Caulk is Mildew Resistant
- Paintable & Stainable
- Remains Flexible
- Suitable for Below Grade Applications

0870 - 10.1 Fl. Oz. (300 mL)



GLAZING PRODUCTS

Whether you prefer the classic window glazing putty or the water-based formula, Red Devil® has everything needed for your glass pane replacement project.

GLAZING COMPOUND

This siliconized acrylic compound forms an airtight and watertight seal for the installation of glass into the sash.

- Forms a Durable, Flexible, Watertight Seal
- Water-based
- Paintable

0666 - 10.1 Fl. Oz. (300 mL) - White



PRE-MIXED GLAZING COMPOUND

This contractor-grade oil-based glazing compound forms a durable and watertight seal for installing glass in wood or metal sashes.

- Superior Handling Characteristics
- Excellent Adhesion on Metal or Wood
- Knives Exceptionally Well
- Remains Flexible
- Won't Sag or Shrink
- Resists Chalking & Cracking
- Paintable

0662 - 1/2 Pint (236 mL)

0664 - 1 Quart (.95 liter)



Meets requirements of Fed. Spec. TT-S-G-410E and ASTM C669-95.



ZIP-A-WAY® REMOVABLE SEALANT

This specially formulated weather-stripping caulk forms a tight, temporary seal that can easily be peeled away without marking or destroying most painted surfaces. It is easy to apply and provides a watertight and weatherproof seal that prevents drafts and moisture.

- Applies & Dries Clear
- Easy to Remove Within 3 to 6 Months
- Cured Bead is Mildew Resistant
- Paintable
- Suitable for Below Grade Applications

0606 - 10.1 Fl. Oz. (300 mL) - Clear



Specialty Products

Specialty Products

RD3000™

Red Devil's® RD3000™ Line of Advanced Polymer sealants are specially formulated with MaxFlex™ Technology for superior adhesion and flexibility. They offer a lifetime durability guarantee and are water-resistant after 2 hours. These high-quality sealants are perfect for any home improvement or professional job.

RD3000™ ALL PURPOSE SEALANT

This all-purpose sealant is specially formulated to be exposed to water after only 2 hours without washing out. Its advanced MaxFlex Technology™ provides excellent adhesion, flexibility and durability for a waterproof seal that won't crack or shrink.

- All-Weather, Multi-Surface Application
- Withstands Active Joint Movement
- Water Resistant in 2 Hours
- Easy to Gun Out & Smooth
- Paintable
- Cured Sealant is Mold & Mildew Resistant



0986 - 9.0 Fl. Oz. (266 mL) - White
0987 - 9.8 Fl. Oz. (290 mL) - Clear



Meets or exceeds performance requirements of Fed Spec TT-5-00230C Class A & ASTM C920.



RD3000™ SELF LEVELING CONCRETE SEALANT

This advanced self-leveling concrete sealant is designed to offer superior adhesion, without tooling, to a wide variety of substrates. It cures with a smooth finish and is specially formulated to be exposed to water after only 2 hours without washing out.

- All-Weather Multi-Surface Application
- Water Resistant in 2 Hours
- Withstands Active Joint Movement
- Paintable
- Cured Sealant is Mold & Mildew Resistant



0980 - 9.0 Fl. Oz. (266 mL) - Gray



Meets requirements of ASTM C920.



HOUSE & HOME RESTORE

Red Devil's® patented EZ SQUEEZE® Device allows users to wind up the tube as they work, ensuring a steady supply of product that comes out smoothly and easily – every time – down to the last drop.

EZ SQUEEZE® WINDOW & DOOR CAULK

This multi-purpose sealant is formulated to provide an extra-tight seal around windows, doors and other areas of a home. It helps increase energy efficiency by reducing drafts and cold spots.

- Multi-Purpose Application
- Excellent Adhesion
- Cured Caulk is Mildew Resistant
- Paintable
- Dries Quickly & Remains Flexible
- Designed for Easy Application & Tooling

0848 - 5 Fl. Oz. (160 mL) - White



Meets or exceeds requirements of ASTM C834.



EZ SQUEEZE® WALLPAPER SEAM REPAIR

This premium adhesive provides a strong final bond between the surface and wallpaper while preventing peeling in high-humidity areas such as kitchens and baths.

- Excellent Adhesion
- Long-Term Durability
- Designed for Easy Application & Tooling

0878 - 5 Fl. Oz. (160 mL) - Clear

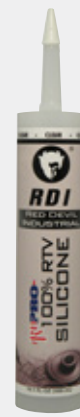


Industrial & Commercial Products

100% RTV SILICONE SEALANT INDUSTRIAL GRADE

This high-performance sealing and glazing compound is ideal for use in most OEM and maintenance applications. It forms a strong, durable and weather-resistant seal, and provides excellent adhesion to most non-porous surfaces.

- NSF listed & Spec Compliant
- Ideal for Making Formed-in-Place Gaskets
- Cured Sealant is Mildew Resistant
- Remains Flexible and Resists Vibration



- 081601 - 10.1 Fl. Oz. (300 mL) - White
- 081621 - 10.1 Fl. Oz. (300 mL) - Almond
- 081641 - 10.1 Fl. Oz. (300 mL) - Bronze
- 081651 - 10.1 Fl. Oz. (300 mL) - Gray
- 081661 - 10.1 Fl. Oz. (300 mL) - Black
- 082601 - 10.1 Fl. Oz. (300 mL) - Clear

Meets or exceeds the requirements of TT-S-00230C, TT-S-001543A, C.G.S.B. 19C9-9, Din 18540 Part 2, Mil. Spec 46106A, CEBTP 432.65 140-2, ASTM C920. USDA authorized for use in federally inspected meat and poultry plants.

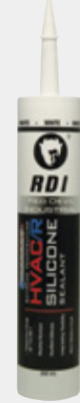
EXTREME TEMPERATURE HVAC/R SILICONE SEALANT

Made especially for HVAC/R applications, this premium sealant provides a long-lasting, weather-resistant seal and offers excellent adhesion, flexibility, and durability. For use on air conditioners, ducts, furnaces, water heaters, refrigerators, vents, and more. It adheres well to metal and most other building materials.

- Excellent Adhesion & Weather Resistance
- Remains Flexible from -60°F to 400°F
- Will Not Crack, Shrink or Peel

- 0896 - 280 mL - White
- 089650 - 280 mL - Aluminum
- 0897 - 280 mL - Clear

Meets or exceeds Federal Specifications TT-S-00230C, Class A, TT-S-001543A Class A, ASTM C920.



100% RTV SILICONE SEALANT HEAT RESISTANT

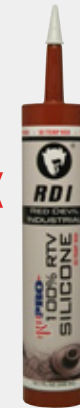
Formulated with iron oxide to resist extreme heat exposure, this one-component, non-slumping sealant cures to a rubbery solid at room temperature. It withstands temperatures up to 600°F and can be used on industrial ovens, heating elements, boilers, and more.

- Waterproof & Weatherproof
- Remains Flexible & Resists Vibration
- Resists Extreme Heat Exposure (up to 600°F)



- 080901 - 10.1 Fl. Oz. (300 mL) - Red
- 082901 - 2.8 Fl. Oz. (83 mL) - Red

Meets or exceeds the requirements of TT-S-00230C, TT-S-001543A, C.G.S.B. 19C9-9, Din 18540 Part 2, Mil. Spec 46106A, CEBTP 432.65 140-2, ASTM C920. USDA authorized for use in federally inspected meat and poultry plants.



SILICONIZED ACRYLIC CAULK CONSTRUCTION GRADE

This superior sealant is fortified with silicone for increased flexibility, excellent adhesion, and extended life.

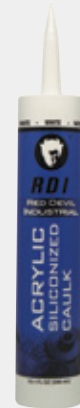
- Extra Bonding Strength For Durable, Watertight Seals
- Paintable
- Cured Sealant is Mildew Resistant
- 35 Year Durability Guarantee



- 084601 - 10.1 Fl. Oz. (300 mL) - White
- 084621 - 10.1 Fl. Oz. (300 mL) - Almond
- 084641 - 10.1 Fl. Oz. (300 mL) - Brown
- 084651 - 10.1 Fl. Oz. (300 mL) - Gray
- 084661 - 10.1 Fl. Oz. (300 mL) - Black
- 087601 - 10.1 Fl. Oz. (300 mL) - Clear



Meets or exceeds the requirements of ASTM C834.



BUTYL RUBBER SEALANT ARCHITECTURAL GRADE

This high-performance, pliable sealant is ideal for below-grade applications or wherever a durable, flexible and watertight seal is required. It adheres to most building surfaces and remains rubbery and flexible.

- Excellent Adhesion to Most Building Surfaces
- Remains Rubbery & Flexible From -20°F to 200°F After Full Cure (7 to 14 days)
- Paintable
- Cured Sealant is Mildew Resistant

- 069701 - 10.1 Fl. Oz. (300 mL) - White
- 0697G1 - 10.1 Fl. Oz. (300 mL) - Gray



Meets or exceeds the requirements of Federal Specifications TT-S-001657, TT-C-00598C, TT-C-1796A.



NOISE PROOF™ ACOUSTICAL SEALANT

This water-based acrylic latex sealant is designed to reduce sound transmissions while sealing joints.

- Maximum Durability & Adhesion
- Barrier to Noise, Dust & Smoke
- Paintable

- 0589 - 28 Fl. Oz. (858 mL) - White



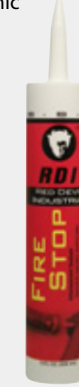
Meets or exceeds requirements of ASTM C834.



FIRESTOP SEALANT

This intumescent, high-solids firestop compound effectively seals penetration openings against the spread of fire, smoke, toxic gases and water when applied properly. Endothermic fillers absorb heat and release water.

- Expands Up to 10x Original Size
- Up To 2-Hour Fire Rating
- Sandable & Paintable at Full Cure with Non-Solvent Paints
- Adheres to Most Common Construction & Penetrant Materials
- Demonstrates Excellent Sound Attenuation Properties
- Paintable (after inspection)



- LC150RD - 9.0 Fl. Oz. (266 mL) - Red



Meets Fed. Specs. ASTM E-814 (UL 1479) and ASTM E-84 (UL 723) and many UL classifications.

NON-COMBUSTIBLE SMOKEBLOCK™

This non-combustible sealant minimizes airflow within wall cavities without contributing to the wall's fuel load and provides smoke and draft re-blocking in wood frame walls and floors.

- Quality Non-Sag Sealant
- Consistent Quality - No Shaking or Mixing Required
- Water-Based for Easy Installation, Clean-Up & Disposal



- SB100RD - 10.1 Fl. Oz. (300 mL) - Red



Meets or exceeds the performance requirements of ASTM E-136.

GENERAL PURPOSE CONSTRUCTION ADHESIVE

This professional-strength, solvent-free adhesive contains no ozone-depleting chemicals and is ideal for stone, marble, hardboard, gypsum wallboard, slate, ceramic tile, polyurethane, and polystyrene foams.

- Multi-Surface Application
- Non-Flammable
- Environmentally Safe - No Ozone Depleting Chemicals or Solvents

- 077606 - 9.0 Fl. Oz. (266 mL) - White
- 0779 - 28 Fl. Oz. (858 mL) - White



Meets or exceeds the performance requirements of ASTM C-557 and AFG-01.



QUICK GRIP™ CONSTRUCTION ADHESIVE

This premium, all-purpose construction adhesive has a quick setting instant grab that holds like an iron grip.

- High Initial Tack & Strength
- Cured Sealant is Water & Mildew-Resistant
- Environmentally Safe
- Non-Flammable
- Freeze/Thaw Stable

- 0696 - 9.0 Fl. Oz. (266 mL)



Meets or exceeds the performance requirements of ASTM C-557 and AFG-01.



STRONG BOND HEAVY-DUTY ADHESIVE

This premium performance adhesive/sealant is formulated with an unmatched durability and maximum strength. Its innovative MS Polymer technology performs on a variety of substrates in many environments. It is the top choice for many commercial, construction and industrial applications.

- Outstanding Quick Bond Strength on Most Substrates
- Forms an Extra Flexible, Watertight Seal in Almost Every Application
- Excellent Paintability with Latex or Oil-Based Paint
- Resistant to UV Degradation & Weathering
- Broad Adhesion Range

- 0956 - 9.0 Fl. Oz. (266 mL) - White



DUCT SEALANTS

F-SEAL 181® WATER-BASED DUCT SEALANT

This high quality, fiber-reinforced duct sealant/mastic is UL 181 A-M & B-M certified and can be used on all types of HVAC ductwork.

- Works Great with High Velocity Systems

- 0841DW - 1 Gallon - White
- 0841DX - 1 Gallon - Gray
- 0845DW - 28 Fl. Oz. (858 mL) - White
- 0845DX - 28 Fl. Oz. (858 mL) - Gray
- 0847DW - 2 Gallons - White
- 0847DX - 2 Gallons - Gray
- 0848DW - 5 Gallons - White
- 0846DW - 10.1 Fl. Oz. (300 mL) - White
- 0846DX - 10.1 Fl. Oz. (300 mL) - Gray



RD-DS 181 ACRYLIC DUCT SEALANT

This gray water-based duct sealant is formulated to seal metal to metal joints in medium and high-pressure systems of spiral and rectangular ductwork.

- Permanently Flexible & Water-Resistant
- Cured Sealant is Mold & Mildew Resistant
- Paintable
- Non-Flammable
- Strong Adhesive Grip

- 0841DS - 1/2 Gallon (946 mL) - Gray
- 0846DS - 10.1 Fl. Oz. (300 mL) - Gray



WATER-BASED SPRAYABLE INSULATION ADHESIVE

Water-Based Insulation Adhesive is engineered for gun spray, spray coil line, brush, and roller applications. This product has been developed to erase clogging within the adhesive delivery system and to allow for consistent operation. It provides excellent bond strength in an easy-to-clean up, cost-effective, low-viscosity product.

- Sprayable
- Brush & Roller Compatible
- Strong Bond Strength
- Contains No Solvents

- 0597 - 5 Gallons - White
- 0599 - 52 Gallons - White



D-SEAL® WATER-BASED DUCT SEALANT

This premium grade, smooth, water-based duct sealant is UL181 A-M & B-M certified and has been formulated for high and low-velocity duct systems. It provides excellent adhesion to galvanized metal and cures to a tough, durable film.

- 0841DI - 1 Gallon - Gray
- 0845DI - 28 Fl. Oz. (858 mL) - Gray
- 0847DI - 2 Gallons - Gray
- 0848DI - 5 Gallons - Gray
- 0846DI - 10.1 Fl. Oz. (300 mL) - Gray



MULTI-PURPOSE SPRAY TACK™

This transparent and pressure-sensitive spray provides instant tack with low soak-in, is repositionable and has a web-spray pattern for better coverage. It is ideal for bonding fiberglass insulation. This product has a high "green" strength and will not degrade the substrate if sprayed from a distance of 12-15 inches.

- Immediate Tack & Repositionable/Flexible Bond Line
- Adjustable Spray Pattern
- Low Soak-In
- Transparent

- 0843DI - 12 Oz. (340 g)
- 0849DI - 40 Lb.



ADHESIVE CANNISTER GUN & HOSE

Required for use of Red Devil's Multi-Purpose Spray Tack canister.

- Spray width and output may be adjusted from 2 inches to 12 inches
- 12-foot nylon/synthetic rubber canister hose

- 1070 - Adjustable Canister Spray Gun
- 1071 - 12' Adhesive Canister Hose
- 1072 - Adhesive Canister Gun & Hose Attachment Kit



FOAM & FILL®

LARGE GAPS & CRACKS POLYURETHANE FOAM

This triple-expanding polyurethane foam sealant expands to fill large holes, cracks, gaps and voids around windows, doors, pipes, outlets, vents, and foundations. This insulating foam forms an airtight, waterproof bond and seals out drafts, moisture, and pests

- Fills Large Holes, Gaps & Cracks
- Cured Foam Can Be Sanded, Painted or Stained
- Contains No HCFCs or CFCs
- Quick & Easy to Use

- 0908 - 8 Oz. (227 g)
- 0909 - 12 Oz. (340 g)
- 0912 - 20 Oz. (570 g)



SMALL GAPS & CRACKS POLYURETHANE FOAM

This minimal expanding polyurethane foam sealant seals, bonds and insulates by filling small holes. Use on ceilings, floorboards, around cinder block walls, cables, plumbing, central heating pipes, and ducts.

- Fills Small Holes, Gaps & Cracks
- Cured Foam Can Be Sanded, Painted or Stained
- Contains No HCFCs or CFCs
- Quick & Easy to Use

- 0913 - 12 Oz. (340 g)
- 0920 - 20 Oz. (570 g)



LANDSCAPE FOAM ADHESIVE/SEALANT

This Foam adhesive is designed with a unique multi-use dispensing system, featuring a straw dispenser with a retaining holder and high-flow PAGERIS Valve. This foam is specially formulated to keep its black color and provide UV resistance to blend with its landscape and natural surroundings. It bonds nicely to porous and non-porous rock, stone cement, wood, and fabric. It effectively directs water flow in pond or waterfall applications and is safe for use around fish or plants.

- Bonds to Rock, Stone, Cement, Masonry & Wood
- Directs Water Flow in Ponds and Waterfalls
- Fills & Seals, Plus Excellent Adhesion
- Water & Mold Resistant
- Multi-Use Dispensing System w/ High-Flow Valve

- 0916 - 12 Oz. (340 g) - Black



WINDOW & DOOR POLYURETHANE FOAM

This foam is specifically formulated for filling, insulating and sealing around windows and doors. Its innovative, low pressure and low expansion formula eliminates the chance of window bowing and provides a full cavity fill. It takes the shape of all cavities, forming a permanent, airtight and water-proof seal on wood, metal, masonry, glass and most plastics. It stops air infiltration and in turn prevents heat loss and drafts.

- Eliminates Window & Door Frame Bowing
- More Efficient Than Fiberglass
- Multi-Directional Dispensing
- Contains No CFCs & HCFCs

- 0914 - 12 Oz. (340 g)



FIRE BLOCK POLYURETHANE FOAM

This ready to use polyurethane expanding foam fills, insulates and seals gaps, cracks, and openings in buildings to inhibit the passage of fire through residential utility penetrations. It is excellent in sealing against gas, smoke, and energy loss.

- Inhibits the Passage of Fire Through Residential Utility Penetrations
- Excellent Sealing Against Gas, Smoke & Energy Loss
- Type V Residential Fireblock
- Quick & Easy to Use
- Paintable (after inspection)

- 0915 - 12 Oz. (340 g)



Evaluated Per ICC-ESR-3402 and tested according to ASTM E 814 NFPA 286.

MOUSE & PEST BLOCKER FOAM

This Foam is a specially formulated anti-pest, EPA-registered, deterrent that shields the foam from attacks by mice, birds, bats, squirrels, and many other pests. This foam effectively fills, seals, and insulates areas such as gaps and cracks around pipe/electrical crevices, inside garages, attics, crawl spaces, basements, or any areas where pests, insects, or drafts can enter your home or living spaces.

- Olfactory Deterrent
- Seals Out Mice and Pests
- Fills Holes, Gaps, and Cracks
- Insulates and Prevents Drafts
- Interior & Exterior Use

- 0918 - 12 Oz. (340 g)



FOAM & FILL®

FIRE BLOCK POLYURETHANE GUN FOAM SEALANT

Foam & Fill® Fire Block is a self-extinguishing polyurethane foam sealant specially formulated to inhibit the spread of flames through concealed cavities by blocking the free flow of air, smoke, and gas. This one-component, ready-to-use foam sealant expands quickly upon application and cures to a water/air-tight seal.

- Extreme Heat Resistance
- Restricts the Spread of Fire and Smoke
- Type V Residential Fire Block
- High Expansion Rate with High-Yield Coverage
- Superior Adhesion to Most Substrates
- Seals Against Gas and Energy Loss

0925 - 24 Oz. (680g) Gun Foam Canister



WINDOW & DOOR POLYURETHANE GUN FOAM

This foam is specifically formulated for filling, insulating and sealing around windows and doors. Its innovative, low pressure and low expansion formula eliminates the chance of window bowing and provides a full cavity fill. It takes the shape of all cavities, forming a permanent, airtight and water-proof seal on wood, metal, masonry, glass and most plastics. It stops air infiltration and in turn prevents heat loss and drafts.

- Eliminates Window & Door Frame Bowing
- More Efficient Than Fiberglass
- Multi-Directional Dispensing
- Contains No CFCs & HCFCs

0924 - 24 Oz. (680g) Gun Foam Canister



FOAM / GUN CLEANER

Foam & Fill® Foam/ Gun Cleaner removes uncured foam from gun dispensers, tools, and accessories. Formulated to clean both 1-component and 2-component uncured foam.

- Powerful Formula Cleans Uncured Foam From Foam Gun Dispensers.
- Cleaner Designed to Attach to Foam Applicator for Internal Flushing & Cleaning Foam Guns.
- Includes Attached Spray Nozzle
- Not Harmful to the Ozone Layer
- Can Be Used In All Positions

0921 - 12 Oz. (340g) Canister - Clear



PROFESSIONAL FOAM DISPENSING GUN

The Foam & Fill® Pro Dispensing Gun is designed to provide accurate bead control in a quick, convenient way.

- Non-Stick Teflon Tip
- Teflon Coated Aluminum Body
- PTFE Non-Return Ball Check Valve
- Lightweight and Durable
- Provides Accurate Bead Size Range: 1/8" to 3"
- Package Includes: 1 Dispensing Gun, 2 Application Tips & 2 Straws.



3970 - Pro Foam Dispensing Gun

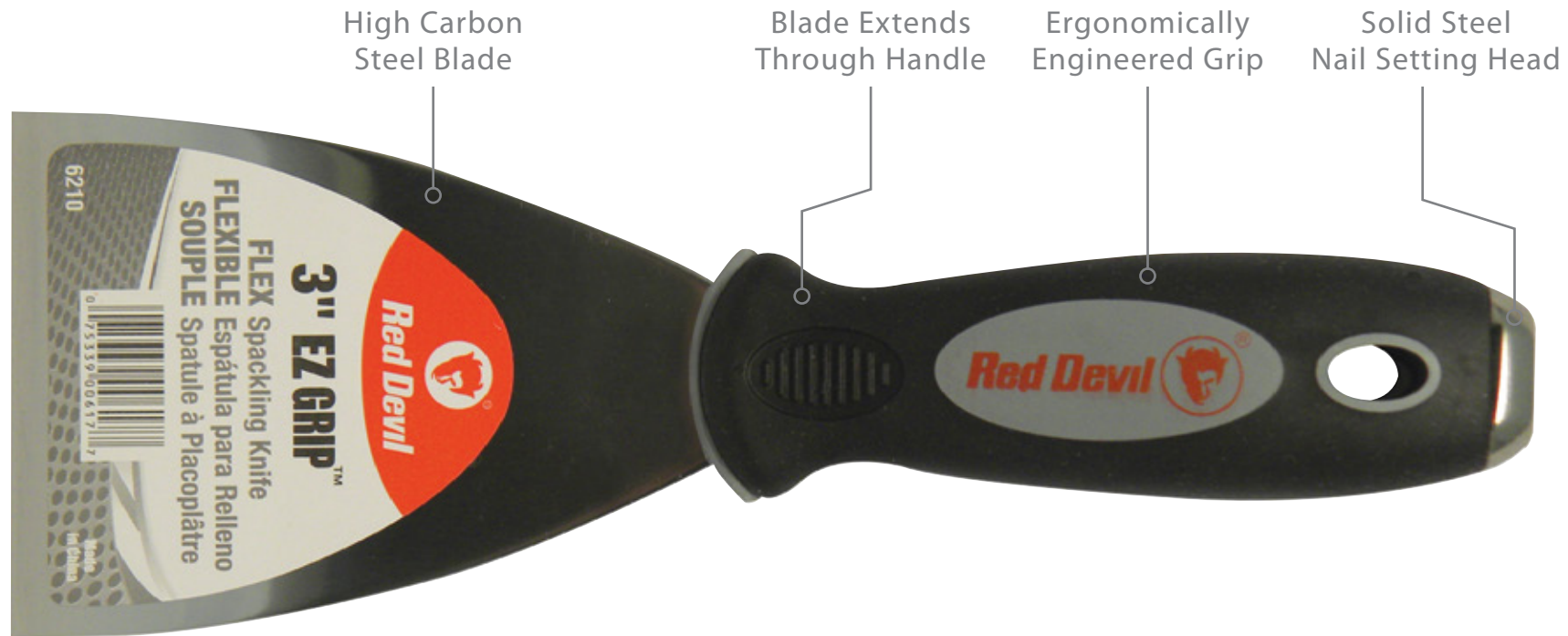
TOOLS



Putty Knives, Wall Scrapers & Taping Knives

Putty Knives, Wall Scrapers & Taping Knives

PUTTY KNIVES	
6203 - 1.5" (3.8 cm)	Stiff
6204 - 1.5" (3.8 cm)	Flex
WALL SCRAPERS	
6209 - 3" (7.6 cm)	Stiff
6213 - 4" (10.2 cm)	Stiff
SPACKLING KNIVES	
6210 - 3" (7.6 cm)	Flex
6214 - 4" (10.2 cm)	Flex
TAPING KNIVES	
6216 - 5" (12.7 cm)	Flex
6218 - 6" (15.2 cm)	Flex



4 PC. PUTTY KNIFE SET

These putty knives feature high-carbon, rust-resistant blades for maximum strength and durability, as well as an ergonomic handle for comfort.

Includes:

- 2" Stiff Putty Knife
- 3" Stiff Putty Knife
- 4" Stiff Putty Knife
- 6-IN-1 Painter's Tool

6090

EZ GRIP™ 6200 PROFESSIONAL SERIES

The EZ GRIP™ series of putty knives, wall scrapers, and taping knives are specially designed with ergonomically engineered handles to decrease hand fatigue. They're constructed with extra sturdy, high-carbon steel blades that resist rust and extend through the handle for maximum strength and dependability. The durable brass-plated, solid steel head can be used for setting nails and other hammering jobs.

MULTI-TOOLS

7-in-1 Multi-Purpose Painter's Tool

Uses Include:

- Scraper
- Spreader
- Gouger
- Putty Remover
- Paint Roller Cleaner
- Nail Setter
- Nail Puller

6251

11-in-1 Multi-Purpose Decorating Tool

Uses Include:

- Scraper
- Spreader
- Gouger
- Hammer
- Rake
- Opener
- Linoleum Knife
- Putty Remover
- Paint Roller Cleaner
- Nail Setter
- Nail Puller

6291

Folding 14-in-1 Painter's Tool

Uses Include:

- Scraper
- Spreader
- Can Opener
- Crack Cleaner
- Nail Puller
- Roller Cleaner
- Convex Scraper
- Bottle Opener
- Nail Setter
- Concave Scraper
- Setting Push Points
- Caulk Remover
- Cutting Blade
- Putty Knife

6293

Putty Knives, Wall Scrapers & Taping Knives

4100 INDUSTRIAL / PROFESSIONAL SERIES

These quality putty knives, wall scrapers, and taping knives include a polished wood handle. It's engineered with a precision ground, rust-resistant, lacquered steel blade that extends through the handle for dependability and long life. The durable brass-plated, solid steel head can be used for setting drywall nails and other hammering jobs.



SCRAPERS & SPACKLING KNIVES

- 4109 - 3" (7.6 cm) Stiff
- 4110 - 3" (7.6 cm) Flex
- 4113 - 4" (10.2 cm) Stiff

BURN-OFF SCRAPING KNIVES

- 4151 - 3" Straight Blade
- 4153 - 3" Bent Blade



PUTTY KNIVES

- 4101 - 1 1/4" (3.2 cm) Stiff
- 4102 - 1 1/4" (3.2 cm) Flex
- 4103 - 1 1/2" (3.8 cm) Stiff
- 4104 - 1 1/2" (3.8 cm) Flex
- 4105 - 2" (5.1 cm) Stiff
- 4106 - 2" (5.1 cm) Flex

PUTTY CHISEL

- 4131 - 1 1/4" (3.2 cm)



4200 PROFESSIONAL SERIES

These professional quality putty knives, wall scrapers, and taping knives are designed with a black nylon, solvent-resistant handle for maximum safety and dependability. The high-carbon, precision-ground steel blade is lacquered to prevent rust and extends through the handle. The durable brass-plated, solid steel nail setting head can be used for setting drywall nails and other hammering jobs.



PUTTY KNIVES

- 4201 - 1 1/4" (3.2 cm) Stiff
- 4202 - 1 1/4" (3.2 cm) Flex
- 4203 - 1 1/2" (3.8 cm) Stiff
- 4204 - 1 1/2" (3.8 cm) Flex
- 4205 - 2" (5.1 cm) Stiff
- 4206 - 2" (5.1 cm) Flex
- 4243 - 1 1/4" (3.2 cm) Bent

WALL SCRAPERS

- 4209 - 3" (7.6 cm) Stiff
- 4213 - 4" (10.2 cm) Stiff

SPACKLING KNIFE

- 4210 - 3" (7.6 cm) Flex

TAPING KNIVES

- 4214 - 4" (10.2 cm) Flex
- 4216 - 5" (12.7 cm) Flex
- 4218 - 6" (15.2 cm) Flex

PUTTY CHISEL

- 4231 - 1 1/4" (3.2 cm) - Stiff

CHISEL WALL SCRAPER

- 4239 - 3" (7.6 cm) - Stiff

PAINTER'S TOOLS

Painter's 6-in-1 Tool (ZIP-A-WAY®)

This one convenient tool has six uses:

- Scraper
- Spreader
- Gouger
- Putty Remover
- Paint Roller Cleaner
- Nail Setter

4251

Brush & Roller Cleaner

This one convenient tool has four uses:

- Scraper
- Nail Setter
- Roller Cleaner
- Brush Cleaner

4260



Putty Knives, Wall Scrapers & Taping Knives

Putty Knives, Wall Scrapers & Taping Knives

4800 D.I.Y. SERIES

These D.I.Y. putty knives, wall scrapers, and taping knives are perfect for the do-it-yourselfer. The high-carbon steel blade is rust-resistant and extends through the sturdy solvent-resistant handle providing the strength and long-life customers expect.



PUTTY KNIVES

- 4823 - 1 1/2" (3.8 cm) Stiff
- 4824 - 1 1/2" (3.8 cm) Flex

SPACKLING KNIFE

- 4830 - 3" (7.6 cm) Flex

TAPING KNIVES

- 4834 - 4" (10.2 cm) Flex
- 4838 - 6" (15.2 cm) Flex
- 4840 - 10" (25.4 cm) Flex

WALL SCRAPER

- 4829 - 3" (7.6 cm) Stiff

PAINTER'S 5-IN-1 TOOL

This handy tool has five uses:

- Scraper
- Spreader
- Gouger
- Putty Remover
- Paint Roller Cleaner



4861

4700 ECONOMY SERIES

These quality plastic putty knives, scrapers, and adhesive scrapers are ideal for most home repair projects.



METAL PUTTY & SPACKLING KNIVES

- 4701 - 1 1/4" (3.2 cm)
- 4704 - 3" (7.6 cm)

PLASTIC TAPING KNIVES

- 4726 - 6" (15.2 cm)
- 4728 - 8" (20.2 cm)

PLASTIC PUTTY & SPACKLING KNIVES

- 4711 - 1 1/2" (3.8 cm)
- 4712 - 2" (5.1 cm)
- 4713 - 3" (7.6 cm)
- 4714 - 4" (10.2 cm)
- 4718 - 3-Pack Knife Set

- This set includes:
- 1 1/2" Putty Knife
 - 3" Spreader
 - 6" Taping Knife



Putty Knives, Wall Scrapers & Taping Knives

Putty Knives, Wall Scrapers & Taping Knives

Wood & Paint Scrapers



The tungsten carbide blades are twice as strong as conventional blades, last up to 10 times longer and resist corrosion. They allow users to scrape any tough surface without gouging, including wood, metal, fiberglass, plastic or concrete. These scrapers conveniently fit any standard extension pole, mop or broom handle to scrape high, hard-to-reach surfaces while standing on the ground.

CARBIDE BLADE WOOD SCRAPER

This high-quality scraper is ideal for professional use.

- Die-Cast Aluminum Scraper
- Soft-Grip, Threaded Ergonomic Handle
- Double-Edge Carbide Blade
- Pull-Knob for Better Grip
- Fits Standard Extension Poles, Mop & Broom Handles



3002 - 2" (5.1 cm) Blade
Use Replacement Blade No. 3012

CARBIDE BLADES

3012 - 2" (5.1 cm) Double-Edge Blade



HEAVY-DUTY FOUR-EDGE SCRAPER

This scraper's contoured handle offers comfort and the easy-grip knob enables users to apply two-handed pressure to the blade when scraping difficult areas.

- Heavy-Duty Black Polypropylene Handle
- Ground 4-Edge, High-Carbon Steel Blade



3160 - 2 1/2" (6.4 cm) Blade
Use Replacement Blade No. 3162

3170 - 3" (7.6 cm) Blade
Use Replacement Blade No. 3169

BLADES

3162 - 2 1/2" (6.4 cm)
3169 - 3" (7.6 cm)



DOUBLE-EDGE SCRAPER

This durable scraper is designed with a contoured, non-slip textured handle for comfort and ease of use.

- Sturdy Lightweight Black Polypropylene Handle
- Double-Edge High-Carbon Steel Blade

3110 - 1" (2.5 cm) Blade
Use Replacement Blade No. 3166

3140 - 1 1/2" (3.8 cm) Blade
Use Replacement Blade No. 3167

3150 - 2 1/2" (6.4 cm) Blade
Use Replacement Blade No. 3168



BLADES

3166 - 1" (2.5 cm)
3167 - 1 1/2" (3.8 cm)
3168 - 2 1/2" (6.4 cm)



TUF-JOB SCRAPER

This quality scraper is designed for flexibility and long life.

- Polished Wood Handle
- Precision Ground, Rust-Resistant, Lacquered Steel Blade
- Blade Extends Through the Handle

4501 - 1 1/2" (3.8 cm) Stiff

4509 - 3" (7.6 cm) Stiff



SINGLE-EDGE PLASTIC SCRAPER

This traditional single-edge steel blade scraper is ideal to remove paint or varnish from furniture, molding, cornices, wooden sashes, etc.

- Heavy-Duty Plastic Handle



3010 - 1" (2.5 cm) Blade
Use Replacement Blade No. 3061

DOUBLE-EDGE PLASTIC SCRAPER

This double-edge steel blade scraper can be used to remove paint or varnish from furniture, molding, cornices, wooden sashes, etc.

- Heavy-Duty Plastic Handle
- Steel Blade



3040 - 1 1/2" (3.8 cm) Blade
Use Replacement Blade No. 3062

3050 - 2 1/2" (6.4 cm) Blade
Use Replacement Blade No. 3063

REPLACEMENT BLADES



3061 - 1" (2.5 cm) Single-Edge
2 Blades per Package

3062 - 1 1/2" (3.8 cm) Double-Edge
2 Blades per Package

3063 - 2 1/2" (6.4 cm) Double-Edge
2 Blades per Package

POLE SCRAPERS

These all-purpose pole scrapers were designed for most surface preparation and paint removal projects. They feature a lightweight, black polypropylene handle and a high-carbon steel blade that allows users to scrape high, hard to reach surfaces easily. They conveniently fit any standard broom or extension pole.

Straight Blade
3015 - 3" (7.6 cm)
Pole not included.

Bent Blade
3016 - 3" (7.6 cm)
Pole not included.



Wood & Paint Scrapers

Wood & Paint Scrapers

WIRE & STRIPPING BRUSHES

These brushes are ideal for paint scraping and most surface preparation projects. Use them to effectively remove paint, grime, varnish or scale from furniture, molding, cornices, wooden sashes, aluminum, brass, iron or copper.



Wood & Paint Scrapers

Wood & Paint Scrapers

SHOE HANDLE WIRE BRUSH

This sturdy brush is ideal for narrow surfaces and ironwork.

- Curved Handle Angled for Comfort

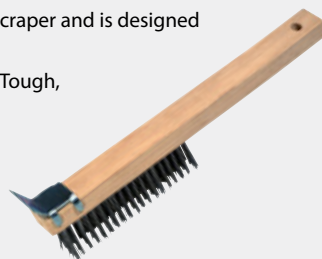


4060 - 10 1/4" (26 cm)

SHOE HANDLE WIRE BRUSH WITH SCRAPER

This brush is equipped with a scraper and is designed especially for tough jobs.

- Effectively Cleans & Removes Tough, Hardened Materials



4062 - 14" (35.6 cm)

MINI WIRE BRUSHES WITH SCRAPER

Mini Brass Brush

Ideal to clean harder surfaces without marring them

4171



Mini Stainless Steel Brush

Ideal for cleaning metal parts that need heavy-duty scrubbing

4172



Mini Nylon Brush

Ideal for gentle use on surfaces

4173



8" STAINLESS STEEL WIRE BRUSH

This brush can be used to remove rust, corrosion, paint, grime, and scale. It is most appropriate for work on steel and iron workpieces. It can also be used on wood, aluminum, brass, and copper.

- Easy-Grip, Durable Handle
- Safe for Use with Solvents
- Great for Use on Masonry & Steel Surfaces



4160

10" STAINLESS STEEL WIRE BRUSH

This brush can be used to remove rust, corrosion, paint, grime, and scale. It is most appropriate for work on steel and iron workpieces. It can also be used on wood, aluminum, brass, and copper.

- Easy-Grip Durable Handle
- Safe for Use with Solvents
- Great for Use on Masonry & Steel Surfaces



4162

6 PC. WIRE BRUSH SET

This set includes a variety of brushes with bristles set at a 5° angle to provide durability and for more force against work surfaces. The brushes also include an edge for scraping and a handle made for a comfortable grip during use.

- (2) Mini Brass Brushes
- (2) Mini Stainless Steel Brushes
- (2) Mini Nylon Brushes



4170

13" STAINLESS STEEL WIRE BRUSH & SCRAPER

This brush can be used to remove rust, corrosion, paint, grime, and scale. It is most appropriate for work on steel and iron workpieces. It can also be used on wood, aluminum, brass, and copper.

- Easy-Grip, Durable Handle
- Safe for Use with Solvents
- Great for Use on Masonry & Steel Surfaces



4164

7" STAINLESS STEEL WIRE SCRUB BRUSH

This brush can be used to remove rust, corrosion, paint, grime, and scale. It is most appropriate for work on steel and iron workpieces. It can also be used on wood, aluminum, brass, and copper.

- Easy-Grip, Durable Handle
- Safe for Use with Solvents
- Great for Use on Masonry & Steel Surfaces



4166

NARROW STRIPPING NYLON BRUSH

This brush can be used to remove paint, grime, and scale.

- Easy-Grip, Durable Handle
- Safe for Use with Solvents



4174

Paint & Finishing Tools

CAULK DEVIL® SMOOTHER & REMOVER

This dual-function tool provides an easy solution for caulk removal and application. The caulk remover (red end) quickly and easily removes old caulk without scratching surfaces, and the caulk smoother (black end) creates a professional finished bead.

- 2 Tools in 1
- Removes Old Caulk Without Scratching Surfaces
- Creates a Perfect Caulk Bead



4052

CAULK FINISHING TOOL

Designed with a flexible head, this finishing tool creates variable beads and can be used on any caulk joint. The tool keeps the fingers clean and works with both silicone and latex caulks.

- Flexible Head

4079 - Caulk Finishing Tool



SSK SEALANT SMOOTHING KIT

This kit simplifies caulking projects and eliminates unsightly feathered edges while keeping the excess sealant from adhering to unwanted areas and reducing skin exposure. It includes a smoothing spray and an innovative smoothing tool designed with 4 bead options.

- Smoothing Tool Features 4 Bead Options
- Eliminates Feathered Edges

0567 - NET WT. 4 Oz. (112.4 g)



3 PACK CAULKING TUBE EXTENSION

These extenders create an airtight seal and bend up to 180° making them an ideal solution for hard to reach caulking jobs. For extended length, two or more attachments can be joined.

- Bends Up to 180°
- Creates Airtight Seal
- Attaches to All Caulking & Adhesive Tubes
- Removable & Reusable
- Adjoin Extenders for Longer Reach

4078 - 3 Pack



SPEED DEMON® PAINT MIXER

This popular paint mixer is designed to mix all viscous fluids quickly and effectively. It can be used to mix paint, coatings, wall textures, and adhesives.

- Adapts to Any 500-1500 rpm Variable Speed Drill

4065 - 1-5 Gallon

4066 - 5 Gallon



HEAVY-DUTY PAINT & MUD MIXER

Mix and stir paint quickly using this mixer.

- For 1-5 Gallon Cans
- Fits All 3/8" Power Drills
- Coated Steel Construction

4040 - 1-5 Gallon

4041 - 5 Gallon Heavy-Duty Fits 1/2" Drill

4043 - 5 Gallon



PAINT MIXER

This mixer conveniently fits any size drill to mix and stir paint quickly.

- Lifts & Blends from the Bottom of the Can
- Durable plastic impeller.

4042 - 1 Gallon



CARTRIDGE CAP

These caps are designed with a unique sealing method that prevents caulk and adhesive cartridges from drying out and reducing product waste.

- Seals Cartridges for Less Waste & More Efficiency
- Easy to Store
- Fits All Size Cartridges

4076 - 2 caps



COMBINATION 5 GALLON PAINT BUCKET OPENER

Specifically designed to conveniently open both 5-gallon bucket lids and 5-gallon bucket spouts all in one tool.

- Ergonomic Handle
- Easy to Clean

4039

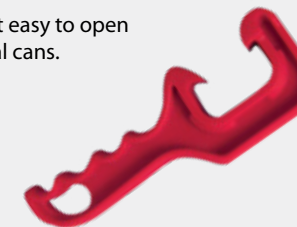


5 GALLON PAIL OPENER

This durable opener makes it easy to open 5-gallon plastic pails or metal cans.

- Easy-Grip Handle

4036

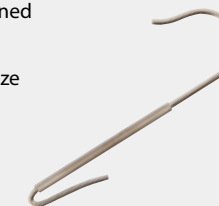


PAINT CAN HOOK

This hook's superior construction is designed for safety and performance.

- Easily Holds Paint Cans Up to 2-Gallon Size
- Wraparound Spring for Securing to All Ladders

3930



PLASTIC DROP CLOTHS

These drop cloths can be used for many purposes around the home, office, workshop and garden.

Size: 9' x 12' (2.7 m x 3.6 m)

- Heavily Embossed Design for Maximum Slip Resistance

3962 - 2 mil gauge



GRAINING TOOL

This graining kit comes with a variety of patterns that allows users to mimic a natural wood grain effect on various surfaces.

Includes:

- 1-Handle
- 3- Wood Graining Tools
 - 1- Wide Curved Grainer
 - 1- Narrow Curved Grainer
 - 1- Triangle Comb



3710

CHIP BRUSHES

These solvent resistant chip brushes are ideal for glues, adhesives, paint removers, and your HVAC needs.

- Wood Handle
- Multiple Uses

4059 - 2" Chip Brush



PAINT BRUSH & ROLLER CLEANER

This tool cleans standard paint rollers and paintbrushes up to 6" using high-speed centrifugal force.

- Durable Steel Construction with Ball Bearing Mechanism for Smooth Operation

4058



Caulk Guns

These sturdy caulk guns are designed for applying caulks, sealants, adhesives, glazing, and other cartridge products.

13" ROTATING BARREL CAULK GUN

This professional-grade caulking gun with 20:1 thrust ratio is the ultimate caulk gun for applying acrylic, silicone and polyurethane materials. Engineered for a smooth and precise material delivery, this caulk gun makes even the thickest of caulks and adhesives easy to apply. The rotating barrel allows for effortless maneuvering in tight, hard to reach areas, and easy cartridge removal and installation. It is compatible with 28 oz. cartridges.

- 20:1 Thrust Ratio
- Drip-Free™ Technology
- Quick-Release Lever
- Heavy-Duty
- Seal Puncture Tool
- Ladder Hook



3939

EXTREME DUTY 9" CAULK GUN

This caulk gun has a 26:1 thrust ratio applicator with 950 pounds of force! It is especially designed for high viscosity materials that are hard to extrude, like hybrid adhesives and epoxies.

- 26:1 Thrust Ratio
- Drip-Free™ Technology
- Revolving, Easy-Load Barrel
- Ergonomic Rubber Trigger
- Quick-Release Lever
- Seal Puncture Tool
- Ladder Hook



3989

REVOLVING BARREL CAULK GUN

This revolving barrel caulk gun has a 10:1 thrust ratio, easy-load barrel and a heavy-duty design with a lightweight feel. It is ideal for medium to heavy applications and its 1/10 gallon barrel holds most standard cartridges.

- 10:1 Thrust Ratio
- Drip-Free™ Technology
- Alloy Handle
- Smooth Piston Rod
- Seal Puncture Tool
- Ladder Hook



3988

SKELETON CAULK GUN, 1 QUART SIZE

This extra-large, heavy-duty caulking gun has a 10:1 thrust ratio and lays flat for space-saving. It is ideal for medium to heavy applications and fits quart-sized cartridges.

- 10:1 Thrust Ratio
- Uni-Rail Construction
- Hex Piston Rod
- Push-Release Lever



3987

NO-DRIP SKELETON CAULK GUN

This professional-quality skeleton caulking gun has a 10:1 thrust ratio & lays flat for space-saving. It is ideal for medium to heavy applications and its 1/10 gallon barrel holds most standard cartridges.

- 10:1 Thrust Ratio
- Drip-Free™ Technology
- Spout Cutter
- Seal Puncture Tool
- Ladder Hook



3984

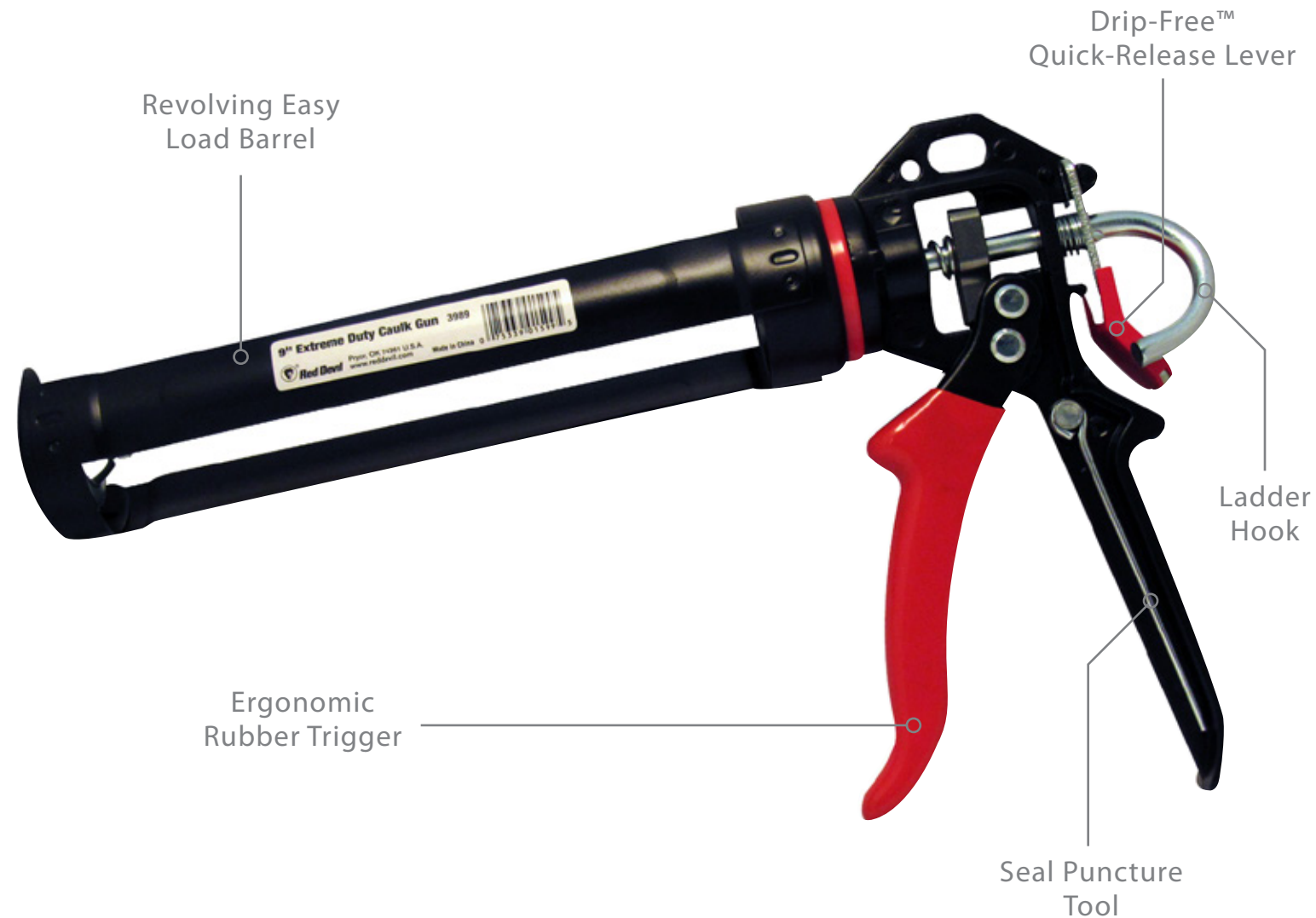
SKELETON CAULK GUN

This skeleton caulking gun has a 10:1 thrust ratio & lays flat for space-saving. It is ideal for light to medium applications and its 1/10 gallon barrel holds most standard cartridges.

- 10:1 Thrust Ratio
- Heavy-Duty Uni-Rail Construction
- Hex Piston Rod
- Push-Release Lever



3986



9" COMPOSITE DRIP-FREE™ CAULK GUN

This caulking gun has a 10:1 thrust ratio and is designed with a reinforced rotating barrel that allows for ease of use and maximum control in hard-to-reach areas for an even, consistent application. The Drip Free™ technology stops caulk from flowing, preventing product loss. It is compatible with standard size caulk or adhesive cartridges.

- 10:1 Thrust Ratio
- Drip Free™ Technology
- Smooth Hex Rod
- Rotating Barrel
- Fingerguard
- Seal Puncture Tool
- Spout Cutter
- Ladder Hook



3935

9" HALF-BARREL DRIP-FREE™ CAULK GUN

Whether used for a sealant project at home or on the job site, this caulk gun offers smooth action, precise application, 8:1 thrust ratio and ease of use. The Drip Free™ technology allows for efficient project completion with no mess or lost material. It is compatible with standard size caulk or adhesive cartridges.

- 8:1 Thrust Ratio
- Drip Free™ Technology
- Spout Cutter
- Seal Puncture Tool
- Ladder Hook



3936

HALF-BARREL CAULK GUN

This caulk gun has a 7:1 thrust ratio and is ideal for light to medium applications. Its 1/10 gallon barrel holds most standard cartridges.

- 7:1 Thrust Ratio
- Half-Barrel with Smooth Rod
- Spout Cutter
- Push-Release Lever
- Seal Puncture Tool



3985

13" RATCHET CAULK GUN

This contractor grade, heavy-duty, steel caulking gun has a 6:1 thrust ratio and is designed for professional use. Its ratchet technology is manufactured for maximum grip, strength, and durability resulting in premium bead consistency and control. It is suitable for use with most caulks and sealants and compatible with 28 oz. cartridges.

- 6:1 Thrust Ratio
- Steel Construction
- Fingerguard
- Safety Strap
- Spout Cutter
- Seal Puncture Tool
- Ladder Hook



3937

TRIM GUARDS & PRY BARS

Versatile and functional, Red Devil's® trim guards and pry bars make jobs easier for professionals and/or do-it-yourselfers. Trim guards eliminate the need for taping and are great for smoothing all types of vinyl wallcoverings. Our pry bars are durable, multi-functional tools that are essential for most projects.

24" MULTI-PURPOSE PAINTER'S TRIM GUARD

This multi-purpose tool can be used as a trimmer, edger, vinyl wallcovering smoother and glass cutting guide. Its straight edge can also be used for cutting or scoring.

- Extra-Long Size Reduces Painting Time of Large Areas
- Durable Stainless-Steel Metal Edge



4047

18" DUAL EDGE PAINTER'S TRIM GUARD

This multi-functional tool features an 18" long trimming edge for large areas and a 6" short edge for challenging corners.

- Easy-Grip Contoured Design
- 2 Edges in 1 Tool



4049

12" MULTI-PURPOSE PAINTER'S TRIM GUARD

This multi-purpose tool can be used as a trimmer, edger, vinyl wallcovering smoother and glass cutting guide. Its straight edge can also be used for cutting or scoring.

- Durable Stainless-Steel Metal Edge

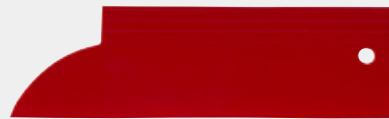


4053

9 1/2" LIGHTWEIGHT PAINTER'S TRIM GUARD

This efficiency tool reduces clean-up time while allowing users to achieve clean lines.

- Lightweight, Sturdy Plastic
- Fits Tight Corners



4048

SCRAPE N' PRY BAR

This multi-purpose tool is essential for professional and general use. It is ideal for various projects including pulling nails, scraping paint and opening boxes.

- Chisel Edge on Both Ends
- Constructed with Hardened, Tempered Steel



4050 - 1 3/4" x 9 5/8" (4.4 x 24 cm)

CLASSIC SCRAPE N' PRY BAR PRY BAR

This multi-purpose tool is designed for heavy-duty jobs. It is ideal for various projects including pulling nails, scraping paint and opening boxes.

- Chisel Edge on Both Ends
- Made with Durable No Bend Hardened, Tempered Steel



4050CL

STEEL WOOL

There are hundreds of uses for steel wool, and with 8 different grades to choose from, you'll always find the right one for your job. Available in a convenient 8 or 16 pack, steel wool pads are ideal for most household chores, hobbies, and projects.



0000 SUPER FINE STEEL WOOL

Ideal for final finishes.



0320 - 8 pack
0310 - 16 pack

000 EXTRA FINE STEEL WOOL

Ideal for buffing and polishing furniture.



0321 - 8 pack
0311 - 16 pack

00 VERY FINE STEEL WOOL

Ideal for metal polishing.



0322 - 8 pack
0312 - 16 pack

0 FINE STEEL WOOL

Ideal for smoothing and finishing.



0323 - 8 pack
0313 - 16 pack

1 MEDIUM STEEL WOOL

Ideal for general purpose uses.



0324 - 8 pack
0314 - 16 pack

2 MEDIUM COARSE STEEL WOOL

Ideal for surface preparation.



0325 - 8 pack
0315 - 16 pack

3 COARSE STEEL WOOL

Ideal for paint/varnish removal.



0326 - 8 pack
0316 - 16 pack

4 EXTRA COARSE STEEL WOOL

Ideal for heavy-duty jobs.



0327 - 8 pack
0317 - 16 pack

REEL STEEL WOOL - 00 VERY FINE

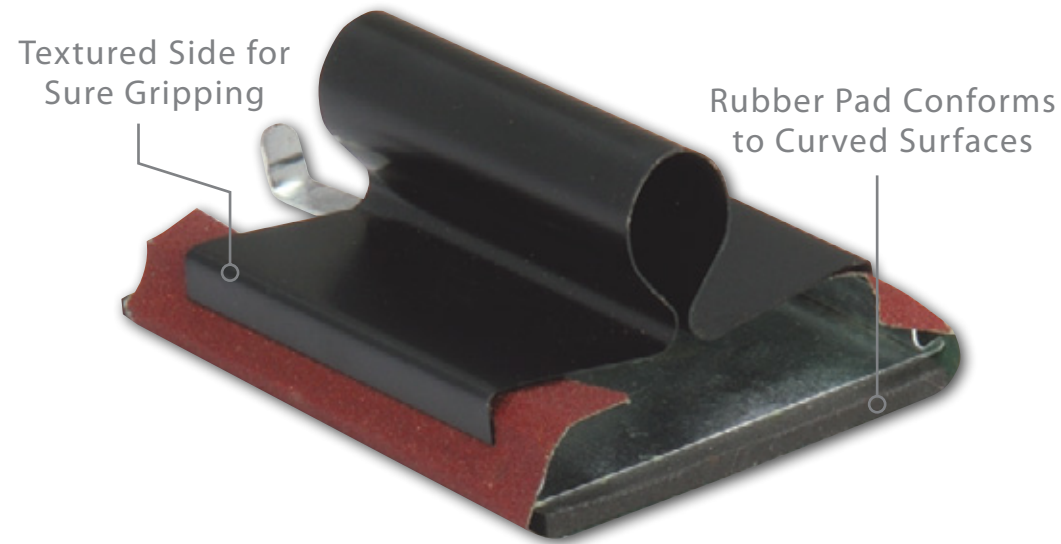
Ideal for metal polishing.



0328 - 5lb. Reel

SANDING TOOLS

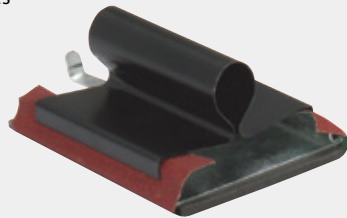
Red Devil® sanding holders can be used for smoothing drywall and wood surfaces prior to painting.



STEEL SANDPAPER HOLDER

This steel holder fits 4 1/2" x 5" sheets and is designed to adapt to multiple surfaces.

- Rubber Pad for Curved Surfaces
- Metal Bottom for Flat Surfaces
- Steel Construction



3319

HAND SANDER

This durable sander holds standard 4 1/4" x 11" sheets and smooths surfaces and joints for priming and painting projects.



2754

PROFESSIONAL POLE SANDER

This tool allows you to sand ceilings and walls from the floor easily and safely.

- 4-Way Swivel Threaded Adapter
- Die-Cast Aluminum Back



2743 - 9 3/8" x 3 1/4" (23.8 cm x 8.3 cm)

Pole not included.

POLE SANDER

This tool helps sand ceilings and other high surfaces from ground level.

- Heavy-Duty, Reinforced Polypropylene Sanding Base with Bonded Rubber Pad
- 4-Way Swivel Threaded Adapter
- Holds Standard 4 1/4" X 11" Sandpaper



2753

Pole not included.

Glazier Tools & Glass Scrapers

DUAL-PURPOSE WINDOW TOOL

This dual-purpose tool includes a flat end that removes putty and a V-shaped end that packs, shapes and trims new putty.

- Stainless Steel Blade
- Tough Plastic Handle



4044

PROFESSIONAL GLASS CUTTER

This industrial quality tool is designed for the professional tradesman and ideal for straight cutting on smooth glass.

- Standard Glass – Steel Wheel/Ball End



102370

Meets Government Specs. GGG-C-751, Type 1, Class 1, Material B/NSN No. 5110-00-222-4400.

DIY GLASS CUTTER

This popular model is ideal for do-it-yourself craftsmen with general glass cutting projects.

- Made of Zinc Die-Cast
- Standard Glass - Steel Wheel/Ball End



106370

Meets Government Specs. GGG-C-751, Type 1, Class 1, Material B/NSN No. 5110-00-222-4400.

PLEXIGLAS® SCORING TOOL

This tool makes scoring Plexiglas®, acrylic and plastic quick and easy.

- Molded Plastic Handle
- Sharp Steel Blade



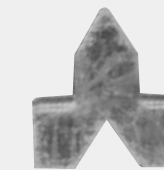
1170

PLEXIGLAS® is a Registered Trademark of Rohm & Haas.
*Not to be used as a cutting tool.

GLAZING PUSH POINTS

These push points are ideal for holding glass in picture frames or windows before applying glazing compound.

- Zinc Coated
- Push Easily into Place with Putty Knife
- Approx. 55 Pieces Per Package



1710

GLAZING TRIANGLE POINTS

These points are designed to hold glass in picture frames or windows before applying glazing compound.

- Zinc Coated
- Push Easily into Place with Putty Knife
- Approx. 200 Pieces Per Package



1722

GLASS SCRAPERS

Red Devil® glazier tools and glass scrapers are ideal for glazier cutting projects, glass installations and many home/workplace glass scraping jobs.



MINI GLASS SCRAPER

This economical scraper is ideal for most DIY glass scraping projects.

- Uses a Standard Single-Edge Razor Blade
- Easy Snap-Open Feature for Blade Replacement



3224

Use Replacement Blade No. 3270, 3271, 3272, or 3275

PUSH/PULL WINDOW SCRAPER

This durable scraper is ideal for completing window scraping projects.

- All Metal Construction with Nickel Plate Brass Eyelets
- Push/Pull Action Locks Blade in Place for Use
- Retracts for Safe Storage
- Uses Standard Razor Blades



3222 - With 5 Blades

3223 - 1 Blade

Use Replacement Blade No. 3270, 3271, 3272, or 3275

SOFT GRIP PUSH/PULL SCRAPER

This razor's design combines a soft grip for a safer and more ergonomic comfort. Its simple push/pull action exposes the razor edge for scraping use and retracts it for storing purposes.

- Soft Grip for Ergonomical Comfort
- Contains 5 Standard Single-Edge Blades
- Push/Pull Action Safely Retracts Blade



3219 - With 5 Blades

Use Replacement Blade No. 3270, 3271, 3272, or 3275

WINDOW SCRAPER

This standard scraper is ideal for completing window scraping projects.

- Solvent-Resistant Polypropylene Construction
- Safety Guard Covers Sharp Edge When Not in Use
- Uses Standard Utility Knife Blades



3225

Use Replacement Blade No. 3251

PREMIUM GLASS SCRAPER

This heavy-duty scraper can be used to scrape windows, ceramic tile, glass tile, aid in label removal and more.

- Locking Blade Prevents Blade Slippage
- Soft-Grip Handle
- Non-Slip Push Button



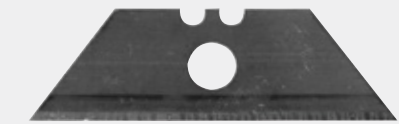
3226

3276 - 5 of 4" Glass Scraper Blades



REPLACEMENT BLADES

REPLACEMENT BLADE STANDARD UTILITY KNIFE



3251 - With 5 Blades

325102 - Dispenser of 100 Blades
Use for Item No. 3204 or 3225

SINGLE-EDGE RAZOR BLADE

These long-wearing blades provide consistent high quality and longer service life.

- Sharp-Cutting Blade Fits All Standard Scrapers



3270 - Box of 10 Blades

32710C - Box of 5 Blades, Carded

3272 - 100 Blades

3272BB - 100 Blades/Plastic Dispenser Box

3275 - 10 Blades/Safety Dispenser Box

Specialty & Utility Knives

Red Devil® offers a complete line of utility knives for the professional tradesman and DIYer, ranging from pocket-size knives to heavy-duty knives.


Specialty & Utility Knives
Specialty & Utility Knives

ADJUSTABLE UTILITY KNIFE

This knife provides a crisp cut or score on a variety of materials including carpeting, matboard, linoleum, vinyl tiles, etc.

- Adjustable Blade of Die-Cast Metal
- Unique "Button" Locks Blade to Cut in Different Positions
- Easy Access into Handle for Blade Replacement & Storage



3204
Use Replacement Blade No. 3251

BOX CUTTER

This cutter is ideal for most DIY cutting projects.

- All-metal Fabrication
- Uses A Standard Single-Edge Razor Blade



3221 - Individually Carded
Use Replacement Blade No. 3270, 3271, 3272, or 3275

TUF-KUT™ AUTO-LOAD UTILITY KNIFE

This high-quality retractable knife combines fast action, safe blade changing with a heavy-duty, ergonomic design.

- Heavy-Duty, Die-Cast Body
- Retractable, Auto-Loading Feature with No Tools Required for Blade Change
- Unique Knife Magazine Holds 10 Standard 2-Notch Utility Blades



3207
Use Replacement Blade No. 3251

HEAVY-DUTY FOLDING LOCK UTILITY KNIFE

This heavy-duty knife is designed with multi-function and durability in mind. Features include an easy pushbutton press and release blade, and multiple blade locking positions.

- Durable Metal Body for Long Tool Life
- Blade Storage Compartment
- Quick-Change Blade Mechanism for Easy Change & Removal



3208
Use Replacement Blade No. 3251

18 mm UTILITY KNIFE WITH BREAKAWAY BLADE

This knife is ideal for cutting wallcovering, drywall, carpeting, vinyl and more.

- Positive-Lock Feature Holds Blade Safely & Tightly in Cutting Position
- Stainless-Steel Breakaway Blade with 8 Sharp Cutting Edges
- Blade Retracts Safely into Handle When Not in Use



3209
Use Replacement Blade No. 3255

HEAVY-DUTY 18 mm UTILITY KNIFE

This heavy-duty knife with an automatic lock feature cuts wallcovering, drywall, carpeting, and vinyl.

- Auto-Lock Feature Locks Blade into Position for Safety
- Stainless-Steel Breakaway Blade with 8 Sharp Cutting Edges
- Blade Retracts Safely into Handle When Not in Use



3212
Use Replacement Blade No. 3255

REPLACEMENT BREAKAWAY BLADE



3255 - 18mm, 3 Blades

Drywall & Wallcovering Tools

BLUE STEEL TAPING KNIVES

Tempered for maximum strength, this knife is made of the highest quality, flexible blue steel.

- Lacquered Blade to Prevent Rusting
- Backing Plate Securely Welded Handle
- Long, Cushion Handle

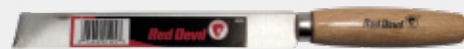


- 2750 - 8" (20.3 cm) Blade
- 2751 - 10" (25.4 cm) Blade
- 2752 - 12" (30.5 cm) Blade

BATTING KNIVES

These knives are designed with a hardened high-carbon chrome vanadium steel, high-alloy, stainless steel blade that is corrosion resistant and gives enhanced sharpness, edge holding, and ease of re-sharpening. Their natural hardwood handles provide a functional and solid grip.

- Hardened High-Carbon Chrome Vanadium Steel, High-Alloy, Stainless Steel Blade
- Corrosion Resistant Blade
- Cuts Various Thicknesses of Fiberglass Insulation with Ease



4609 - 8" x 1" x .083"

PLASTIC MUD PAN

This durable pan is ideal for wiping excess product from taping knives and more.

- Impact & Solvent-Resistant Plastic
- Built-In, Rust-Resistant Steel Blades Angled for Wiping Excess From Taping Knives



2740 - 14"



WALLCOVERING TOOLS

Whether repairing or installing wallcoverings, these Red Devil® tools are the ideal solution.

ANGLED 3" WALLPAPER STRIPPERS

Designed with an angled head, this stripper makes wallpaper removal projects easier.

- Single-Edge Blade
- Tubular Steel Handle
- Non-Slip Vinyl Grip



3241 - Angled Wallpaper Stripper, 3" Blade 3" (7.6 cm)
Use Replacement Blade No. 3273 or 3274

BLADE

3" (7.6 cm) single-edge blade. Fits Wallpaper Stripper No. 3241.



3274 - 2 Blades per pack

ANGLED 4" WALLPAPER STRIPPERS

Designed with an angled head, this stripper makes wallpaper removal projects easier.

- Single-Edge Blade
- Tubular Steel Handle
- Non-Slip Vinyl Grip



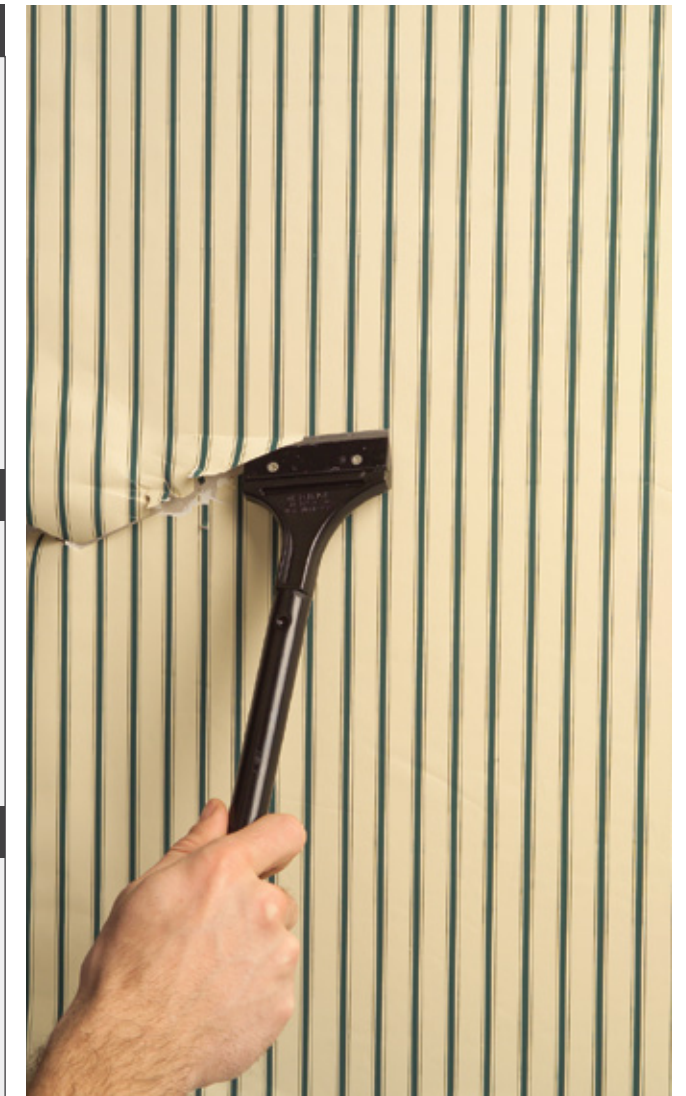
3243 - Angled Wallpaper Stripper, 4" Blade
Use Replacement Blade No. 3277

BLADE

4" (10.2 cm) single-edge blade. Fits Wallpaper Stripper No. 3243.



3277 - 5 Blades per pack



COMBINATION WALLCOVERING TOOL

This multipurpose tool was designed to trim, edge, smooth, score, and measure. Ideal projects include joint tape application, wallcoverings, smoothing patching plaster, keeping paint off trim and joint compound application.

- Trim Guard / Edger
- Smoother / Scorer
- Measurer (includes a ruler & 45° / 75° angle guides)



4716 - Smoother, Patcher, Trim Guard

Flooring Tools

Red Devil® offers many quality tools needed to complete professional installation or removal flooring projects.

V-NOTCH TROWEL

This trowel is designed for installing tile, carpet and more.

- Hard, Cold-Rolled Steel Blade for Longer Wear
- Chemical Resistant, Comfortable Complex® Coiled Plastic Handle
- For Use with Trowelable Adhesives on FRP, Panels, Tile & Mosaic Tile



- 2091 - 1/4" x 1/4" x 3/4"
- 2092 - 7/32" x 5/32"
- 2093 - 3/16" x 1/4" x 1/2"

DUAL NOTCHED MULTI-PURPOSE SPREADER, STRAIGHT BLADE

This solidly constructed trowel is uniquely designed with two different notch sizes on each side for multipurpose uses.

- Chemical Resistant, Comfortable Complex® Coiled Plastic Handle
- Tough Welded Mounting
- Hard, Cold-Rolled Steel Blade for Longer Wear



- 2084 - A9, C1 Notch
- Size: 4 1/2" x 10" (11.4 cm x 25.4 cm)

DUAL NOTCHED MULTI-PURPOSE SPREADER, ANGLED BLADE

This angle trowel is designed for multi-purpose use with two different notch sizes.

- Chemical Resistant, Comfortable Complex® Coiled Plastic Handle
- Tough Welded Mounting
- Hard, Cold-Rolled Steel Blade for Longer Wear



- 2089 - A1, A2 Notch
- Size: 4 1/2" x 10" (11.4 cm x 25.4 cm)



GUIDE TO TROWEL NOTCHES

<p>For linoleum, asphalt floorings, and mosaic tile.</p> <p>A7</p>	<p>For Portland cement mortar adhesives for ceramic floor tile.</p> <p>A8</p>	<p>For plastic wall tiles.</p> <p>A9</p>	<p>For Portland cement mortar type adhesives for quarry tile.</p> <p>B3</p>
<p>For rubber, plastic, floor tile and linoleum.</p> <p>A1</p>	<p>For vinyl floor covering and light gauge vinyl floor tile.</p> <p>A2</p>	<p>For metal and ceramic wall tile and wallboard.</p> <p>A4</p>	<p>For metal and ceramic tile.</p> <p>A6</p>
<p>For sponge and foam backed indoor-outdoor carpet.</p> <p>B6</p>	<p>For mortar set metal and ceramic wall tile and wallboard.</p> <p>C1</p>	<p>For metal, ceramic tile, wallboard, cork tile and parquet.</p> <p>C3</p>	<p>Portland cement for ceramic floor tile, quarry tile and marble.</p> <p>C9</p>

MULTI-NOTCH PLASTIC ADHESIVE SPREADER

This multi-use spreader is designed with multiple notch sizes.

- Made with High Impact Plastic



2430 - 1/8", 3/16", 1/4" Notches

FLOORING KNIFE

This hook knife is designed for removing or installing flooring, carpeting, vinyl, and drywall.

- High-Carbon Steel Blade
- Precision Ground Angle Sharpened for Cutting Ease
- Non-Slip Comfort-Grip Handle



4608



UTILITY PATCHER

This multipurpose tool can be used as a scraper, patcher, and trowel for plaster, cement, mortar, and putty.

- Rust-Proof Stainless Steel



4045

PLASTIC ADHESIVE SPREADER

These economy spreaders are ideal for one-time use to spread mastic, glue, and epoxy.



4723 - 1/4" V - Notch

4081 - 1/8" Square - Notch

SLAMSCRAPER® IMPACT TOOL

This high-quality tool is designed to quickly and easily remove tile, linoleum, carpet, roofing, and other adhesive coverings. Also great for ice removal from driveways, sidewalks and more.

- Sturdy Impact Handle
- "Hammer & Chisel" Effect Reduces Operator Fatigue



2105 - 5' 3" (160 cm)
Use Replacement Blade No. 2106

HEAVY-DUTY SCRAPERS

This short-handle, heavy-duty scraper is ideal for tough scraping jobs. It's designed with a multi-use blade that equips it for any scraping project.

- 4" Double-Edge Blade
- Blunt Edge for Easy Clean Up
- Sharp Edge for Tough Jobs



2107 - 13 3/4" (35 cm)
Use Replacement Blade No. 2109

This long-handle, heavy-duty scraper is ideal for tough scraping jobs that require more reach. It's designed with a multi-use blade that equips it for any scraping project.

- 4" Double-Edge Blade
- Blunt Edge for Easy Clean Up
- Sharp Edge for Tough Jobs



2108 - 4' 1" (124 cm)
Use Replacement Blade No. 2109



REPLACEMENT BLADES

2106 - 6" Spring Steel Blade
Use For Item No. 2105



2109 - 4" Replacement Blade
Use For Items No. 2107 & 2108





Product Number Index - Chemicals

ITEM #	PRODUCT DESCRIPTION	PAGE #
0150	Tub & Wall Caulk Strip, White, 7/8" x 11'	10
0151	Tub & Wall Caulk Strip, White, 1 5/8" x 11'	10
0152	Fixture Caulk Strip, White, 1/2" x 6'	10
0155	Wall & Counter Caulk Strip, White, 1" x 12'	10
0170	Tub & Floor Caulk Strip, White, 1 1/2" x 5'	10
0405	Kitchen & Bath Siliconized Acrylic Caulk, White, 5.5 Fl. Oz.	10
040520	Kitchen & Bath Siliconized Acrylic Caulk, Almond, 5.5 Fl. Oz.	10
0406	Kitchen & Bath Siliconized Acrylic Caulk, White, 10.1 Fl. Oz.	10
040620	Kitchen & Bath Siliconized Acrylic Caulk, Almond, 10.1 Fl. Oz.	10
0408	Kitchen & Bath Siliconized Acrylic Caulk, Clear, 10.1 Fl. Oz.	10
0409	CREATE-A-COLOR® Caulk, 9.4 Fl. Oz.	8
0422	Pre-Mixed Tile Grout, .5 Pt.	4
042260	Pre-Mixed Tile Grout, Black .5 Pt.	4
0424	Pre-Mixed Tile Grout, 1 Qt.	4
0425	Pre-Mixed Tile Grout, 5.5 Fl. Oz.	4
0428	Pre-Mixed Tile Grout, 1 Pt.	4
0445	Kitchen & Bath 10.1 Fl. Oz. Caulk, Clear, 5.5 Fl. Oz.	10
0450	Pre-Mixed Stucco Patch, 1 Qt.	2
0466	Fireplace & Stove Repair, Black, 10.1 Fl. Oz.	11
0497	Tile Paste Adhesive, 5.5 Fl. Oz.	4
0531	Vinyl Spackling Compound, 1 Gallon	2
0531SQ	Vinyl Spackling Compound, 1 Gallon SQ.	1
0532	Vinyl Spackling Compound, .5 Pt.	2
0532SQ	Vinyl Spackling Compound, .5 Pt. SQ.	1
0534	Vinyl Spackling Compound, 1 Qt.	2
0534SQ	Vinyl Spackling Compound, 1 Qt. SQ.	1
0538	Vinyl Spackling Compound, 1 Pt.	2
0538SQ	Vinyl Spackling Compound, 1 Pt. SQ.	1
0540	ONETIME® Lightweight Patch & Prime™, 1 Pt.	1
0541	ONETIME® Lightweight Spackling, 1 Gallon	2
0541SQ	ONETIME® Lightweight Spackling, 1 Gallon SQ.	1
0542	ONETIME® Lightweight Spackling, .5 Pt.	2
0542SQ	ONETIME® Lightweight Spackling, .5 Pt. SQ.	1
0544	ONETIME® Lightweight Spackling, 1 Qt.	2
0544KT	ONETIME® Lightweight Spackling 4 Pc. Kit, 1 Qt.	1
0544SQ	ONETIME® Lightweight Spackling, 1 Qt. SQ.	1
0545	ONETIME® Lightweight Spackling, 6 Fl. Oz.	2
0548	ONETIME® Lightweight Spackling 1 Pt.	2
0548SQ	ONETIME® Lightweight Spackling 1 Pt. SQ.	1
0549	ONETIME® Lightweight Spackling Patch-A-Wall™ Kit.	3
0567	SSK Sealant Smoothing Kit	19
0572	ONETIME® Lighten-Up Lightweight Spackling, .5 Pt.	2
0572SQ	ONETIME® Lighten-Up Lightweight Spackling, .5 Pt. SQ.	1
0574	ONETIME® Lighten-Up Lightweight Spackling, 1 Qt.	2
0574SQ	ONETIME® Lighten-Up Lightweight Spackling, 1 Qt. SQ.	2
0579	ONETIME® Lighten-Up Lightweight Spackling Patch-A-Wall™ Kit.	3
0589	Noise Proof™ Acoustical Sealant, White, 28 Fl. Oz.	15
0597	Water-Based Sprayable Insulation Adhesive, 5 Gallon	17
0599	Water-Based Sprayable Insulation Adhesive, 52 Gallon Drum	17
0606	ZIP-A-WAY® Removable Sealant, Clear, 10.1 Fl. Oz.	12
0615	Vinyl Spackling Compound, 5.5 Fl. Oz.	2
0636	Blacktop & Roof Repair Sealant, Black, 10.1 Fl. Oz.	11
0637	Asphalt Crack Filler, Black, 10.1 Fl. Oz.	11
0641	Pre-mixed Concrete Patch, 1 Gallon	2
0644	Pre-mixed Concrete Patch, 1 Qt.	2
0644SQ	Pre-mixed Concrete Patch, 1 Qt. SQ.	1
0645	Pre-mixed Concrete Patch, 5.5 Fl. Oz.	2
0646	Masonry & Concrete Repair Sealant, Gray, 10.1 Fl. Oz.	11
0662	Pre-mixed Glazing Compound, .5 Pt.	12
0664	Pre-mixed Glazing Compound, 1 Qt.	12
0666	Glazing Compound, White, 10.1 Fl. Oz.	12
0696	Quick Grip™ Construction Adhesive, 9 Fl. Oz.	16

Product Number Index - Chemicals

ITEM #	PRODUCT DESCRIPTION	PAGE #
0697	Gutter & Foundation Sealant, White, 10.1 Fl. Oz.	11
0697AG	Gutter & Foundation Sealant, Gray, 10.1 Fl. Oz.	11
0697OI	Butyl Rubber Sealant Architectural Grade, White, 10.1 Fl. Oz.	15
0697GI	Butyl Rubber Sealant Architectural Grade, Gray, 10.1 Fl. Oz.	15
0705	LIFETIME® Ultra 230 Premium Acrylic Sealant, Clear, 5.5 Fl. Oz.	6
0736	SPEED DEMON® Acrylic Caulk, White, 10.1 Fl. Oz.	7
0746	Painter's Caulk, White, 10.1 Fl. Oz.	7
0750	Kitchen & Bath Stain Block™, White, 10.1 Oz.	9
075022	Kitchen & Bath Stain Block™, Biscuit, 10.1 Fl. Oz.	9
0755	Kitchen & Bath Stain Block™, White, 5.5 Fl. Oz.	9
075522	Kitchen & Bath Stain Block™, Biscuit, 5.5 Fl. Oz.	9
0757	Kitchen & Bath Stain Block™, Clear, 10.1 Fl. Oz.	9
0765	Kitchen & Bath Stain Block™, Clear, 5.5 Fl. Oz.	9
0766	Painter's Plus Siliconized Acrylic Caulk, Pure White, 10.1 Fl. Oz.	7
0770	LIFETIME® Ultra 230 Premium Acrylic Sealant, White, 10.1 Fl. Oz.	6
077010	LIFETIME® Ultra 230 Sealant, Cedar Tan, 10.1 Fl. Oz.	6
077020	LIFETIME® Ultra 230 Premium Acrylic Sealant, Almond, 10.1 Fl. Oz.	6
077040	LIFETIME® Ultra 230 Premium Acrylic Sealant, Brown, 10.1 Fl. Oz.	6
077050	LIFETIME® Ultra 230 Premium Acrylic Sealant, Gray, 10.1 Fl. Oz.	6
077060	LIFETIME® Ultra 230 Premium Acrylic Sealant, Black, 10.1 Fl. Oz.	6
0775	LIFETIME® Ultra 230 Premium Acrylic Sealant, White, 5.5 Fl. Oz.	6
0777	LIFETIME® Ultra 230 Premium Acrylic Sealant, Clear, 10.1 Fl. Oz.	6
077606	General Purpose Const. Adhesive, White, 9 Fl. Oz.	16
0779	General Purpose Const. Adhesive, White, 28 Fl. Oz.	16
0780	STORMGUARD™-920 100% RTV Silicone, White, 10.1 Fl. Oz.	5
078040	STORMGUARD™-920 RTV Silicone, Brown, 10.1 Fl. Oz.	5
078050	STORMGUARD™-920 RTV Silicone, Gray, 10.1 Fl. Oz.	5
078060	STORMGUARD™-920 RTV Silicone, Black, 10.1 Fl. Oz.	5
0785	STORMGUARD™-920 RTV Silicone, White, 2.8 Fl. Oz.	5
0787	STORMGUARD™-920 RTV Silicone, Clear, 10.1 Fl. Oz.	5
0795	STORMGUARD™-920 RTV Silicone, Clear, 2.8 Fl. Oz.	5
0802	Crack Patch™ Premium Spackling, .5 Pt.	2
0804	Crack Patch™ Premium Spackling, 1 Qt.	2
0805	Crack Patch™ Premium Spackling, 5.5 Fl. Oz.	2
080901	100% Silicone Sealant Heat Resist. RTV, Red, 10.1 Fl. Oz.	15
0810	100% Silicone Sealant, White, 2.8 Fl. Oz.	6
0816	100% Silicone Sealant, White, 9.8 Fl. Oz.	6
081640	100% Silicone Sealant, Bronze, 9.8 Fl. Oz.	6
081650	100% Silicone Sealant, Gray, 9.8 Fl. Oz.	6
081660	100% Silicone Sealant, Black, 9.8 Fl. Oz.	6
081601	100% Silicone Sealant Industrial Grade, White, 10.1 Fl. Oz.	15
081621	100% Silicone Sealant Industrial Grade, Almond, 10.1 Fl. Oz.	15
081641	100% Silicone Sealant Industrial Grade, Bronze, 10.1 Fl. Oz.	15
081651	100% Silicone Sealant Industrial Grade, Gray, 10.1 Fl. Oz.	15
081661	100% Silicone Sealant Industrial Grade, Black, 10.1 Fl. Oz.	15
0816KB	Silicone Shield™ Kitchen & Bath Sealant, White, 10.1 Fl. Oz.	9
0820	100% Silicone Sealant, Clear, 2.8 Fl. Oz.	6
0826	100% Silicone Sealant, Clear, 9.8 Fl. Oz.	6
0826KB	Silicone Shield™ Kitchen & Bath Sealant, Clear, 10.1 Fl. Oz.	9
082601	100% Silicone Sealant Industrial Grade, Clear, 10.1 Fl. Oz.	15
082901	100% Silicone Sealant Heat Resist. RTV, Red, 2.8 Fl. Oz.	15
0836	Kitchen & Bath Low Odor Silicone Sealant, White, 10.1 Fl. Oz.	10
083620	Kitchen & Bath Low Odor Silicone Sealant, Almond, 10.1 Fl. Oz.	10
0841DI	D-Seal® Duct Sealant, Gray, 1 Gallon	17
0841DW	F-Seal® 181 Water-Based Duct Sealant, White, 1 Gallon	17
0841DX	F-Seal® 181 Water-Based Duct Sealant, Gray, 1 Gallon	17
0841DS	RD • DS 181 Acrylic Duct Sealant, Gray, .5 Gallon	17

Product Number Index - Chemicals

ITEM #	PRODUCT DESCRIPTION	PAGE #
0843DI	Multi-Purpose Spray Tack™, 12 Oz.....	17
0845DI	D-Seal® Duct Sealant, Gray, 28 Fl. Oz.....	17
0845DW	F-Seal® 181 Water-Based Duct Sealant, White, 28 Fl. Oz.....	17
0845DX	F-Seal® 181 Water-Based Duct Sealant, Gray, 28 Fl. Oz.....	17
0846	Window & Door Acrylic Caulk, White, 10.1 Fl. Oz.....	5
084601	Siliconized Acrylic Caulk Const. Grade, White, 10.1 Fl. Oz.....	15
084620	Window & Door Siliconized Acrylic Caulk, Almond, 10.1 Fl. Oz.....	5
084630	Window & Door Siliconized Acrylic Caulk, Cedar, 10.1 Fl. Oz.....	5
084640	Window & Door Siliconized Acrylic Caulk, Dark Brown, 10.1 Fl. Oz.....	5
084641	Siliconized Acrylic Caulk Const. Grade, Bronze, 10.1 Fl. Oz.....	15
084650	Window & Door Siliconized Acrylic Caulk, Gray, 10.1 Fl. Oz.....	5
084651	Siliconized Acrylic Caulk Const. Grade, Gray, 10.1 Fl. Oz.....	15
084660	Window & Door Siliconized Acrylic Caulk, Black, 10.1 Fl. Oz.....	5
084661	Siliconized Acrylic Caulk Const. Grade, Black, 10.1 Fl. Oz.....	15
0846DI	D-Seal® Duct Sealant, Gray, 10.1 Fl. Oz.....	17
0846DS	RD • DS 181 Acrylic Duct Sealant, Gray, 10.1 Fl. Oz.....	17
0846DW	F-Seal® 181 Water-Based Duct Sealant, White, 10.1 Fl. Oz.....	17
0846DX	F-Seal® 181 Water-Based Duct Sealant, Gray, 10.1 Fl. Oz.....	17
0847DI	D-Seal® Duct Sealant, Gray, 2 Gallons.....	17
0847DW	F-Seal® 181 Water-Based Duct Sealant, White, 2 Gallons.....	17
0847DX	F-Seal® 181 Water-Based Duct Sealant, Gray, 2 Gallons.....	17
0848DI	D-Seal® Duct Sealant, Gray, 5 Gallons.....	17
0848DW	F-Seal® 181 Water-Based Duct Sealant, White, 5 Gallons.....	17
0849DI	Multi-Purpose Spray Tack™, 40 Lb.....	17
0848	Window & Door Caulk, White, 5 Fl. Oz.....	14
0856PR	LIFETIME® Window, Door & Trim Advance Sealant Plus Silicone, White, 10.1 Fl. Oz.....	6
0866PR	LIFETIME® Window, Door & Trim Advance Sealant Plus Silicone, Clear 10.1 Fl. Oz.....	6
0870	Clear Caulk High Performance Adhesive, 10.1 Fl. Oz.....	12
0876	Window & Door Siliconized Acrylic Caulk, Clear, 10.1 Fl. Oz.....	5
087601	Siliconized Acrylic Caulk Const. Grade, Clear, 10.1 Fl. Oz.....	15
0878	Wallpaper Seam Repair, 5 Fl. Oz.....	14
0883	Kitchen & Bath Low Odor Silicone Sealant, White, 2.8 Fl. Oz.....	10
0885	Kitchen & Bath Low Odor Silicone Sealant, Clear, 2.8 Fl. Oz.....	10
0887	Kitchen & Bath Low Odor Silicone Sealant, Clear, 10.1 Fl. Oz.....	10
0896	Extreme Temperature HVAC/R Silicone Sealant, White, 280 mL.....	15
089650	Extreme Temperature HVAC/R Silicone Sealant, Aluminum, 280 mL.....	15
0897	Extreme Temperature HVAC/R Silicone Sealant, Clear, 280 mL.....	15
0908	Large Gaps & Cracks Polyurethane Foam, 8 Oz.....	18
0909	Large Gaps & Cracks Polyurethane Foam, 12 Oz.....	18
0912	Large Gaps & Cracks Polyurethane Foam, 20 Oz.....	18
0913	Small Gaps & Cracks Polyurethane Foam, 12 Oz.....	18
0914	Window & Door Polyurethane Foam, 12 Oz.....	18
0915	Fire Block Polyurethane Foam, 12 Oz.....	18
0916	Landscape Foam Adhesive/Sealant, 12 Oz.....	18
0918	Mouse & Pest Blocker Foam, 12 Oz.....	18
0920	Small Gaps & Cracks Polyurethane Foam, 20 Oz.....	18
0921	Foam & Fill® Foam/Gun Cleaner, 12 Oz.....	19
0924	Window & Door Gun Foam, 24 Oz.....	19
0925	Fire Block Polyurethane Gun Foam Sealant, 24 Oz.....	19
0946	QUICK PAINT® Acrylic Caulk.....	7
0956	Strong Bond Heavy-Duty Adhesive, White, 9.0 Fl. Oz.....	16
0970	White PU-970, 10.1 Fl. Oz.....	12
0971	Black PU-970, 10.1 Fl. Oz.....	12
0972	Gray/Limestone PU-970, 10.1 Fl. Oz.....	12
0980	RD3000™ Self Leveling Concrete Sealant, 9.0 Fl. Oz.....	13
0985	Paintable Silicone, White, 9.0 Fl. Oz.....	7
0986	RD3000™ All Purpose Sealant, White, 9.0 Fl. Oz.....	13
0987	RD3000™ All Purpose Sealant, Clear, 9.8 Fl. Oz.....	13
4070	CREATE-A-COLOR® Standard Caulk Mixer.....	8
4071	CREATE-A-COLOR® Pro Caulk Mixer.....	8
4072	Syringes, 25 pack.....	8
4074	CREATE-A-COLOR® Kit.....	8
LC150RD	Firestop Sealant, Red, 9 Fl. Oz.....	16
SB100RD	Non-Combustible SMOKEBLOCK, Red, 10.1 Fl. Oz.....	16

Product Number Index - Tools

ITEM #	TOOL DESCRIPTION	PAGE #	ITEM #	TOOL DESCRIPTION	PAGE #
0310	Steel Wool-Super Fine #0000 - 16 Pack.....	36	3160	2-1/2" Heavy-Duty Scraper.....	27
0311	Steel Wool-Extra Fine #000 - 16 Pack.....	36	3162	2-1/2" Blade for #3160.....	27
0312	Steel Wool-Very Fine #00 - 16 Pack.....	36	3166	1" Blade for #3110.....	27
0313	Steel Wool-Fine #0 - 16 Pack.....	36	3167	1-1/2" Blade for #3140.....	27
0314	Steel Wool-Medium #1 - 16 Pack.....	36	3168	2-1/2" Blade for #3150.....	27
0315	Steel Wool-Medium Coarse #2 - 16 Pack.....	36	3169	3" Blade for #3170.....	27
0316	Steel Wool-Coarse #3 - 16 Pack.....	36	3170	3" Heavy-Duty Scraper With Contour Handle.....	27
0317	Steel Wool-Extra Coarse #4 - 16 Pack.....	36	3204	Adjustable Utility Knife.....	41
0320	Steel Wool-Super Fine #0000 - 8 Pack.....	36	3207	Tuf-Kut™ Auto Load Utility Knife.....	41
0321	Steel Wool-Extra Fine #000 - 8 Pack.....	36	3208	Heavy-Duty Folding Lock Utility Knife.....	41
0322	Steel Wool-Fine #00 - 8 Pack.....	36	3209	18mm Utility Knife w/ Breakaway Blade.....	41
0323	Steel Wool-Fine #0 - 8 Pack.....	36	3212	Heavy-Duty 18 mm Utility Knife - w/ 10 Blades.....	42
0324	Steel Wool-Medium #1 - 8 Pack.....	36	3219	Soft Grip Push Pull Scrape.....	39
0325	Steel Wool-Medium Coarse #2 - 8 Pack.....	36	3221	Box Cutter.....	41
0326	Steel Wool-Coarse #3 - 8 Pack.....	36	3222	Push/Pull Window Scraper, 5 Blades.....	39
0327	Extra Coarse #4 - 8 Pack.....	36	3223	Push/Pull Window Scraper w/1 Blade.....	39
0328	Very Fine #00 - 5 Lb. Reel.....	36	3224	Mini Glass Scraper.....	39
0332	Steel Wool- Multi-Grade 6 Pack.....	36	3225	Plastic Window Scraper w/Utility Blade.....	42
1023/70	Professional Heavy-Duty Glass Cutter.....	38	3226	Premium Glass Scraper.....	40
1063/70	DIY Glass Cutter.....	38	3241	Angled 3" Wallpaper Stripper.....	44
1070	Adjustable Canister Spray Gun.....	17	3243	Angled 4" Wallpaper Stripper.....	44
1070	12' Adhesive Canister Hose.....	17	3251	Utility Blades for #3204, #3206, #3225.....	40
1070	Adjustable Canister Gun & Hose Attachment.....	17	3251/02	Utility Blades for #3204, #3206, #3225.....	40
1170	PLEXIGLASS® Scoring Tool.....	38	3255	Breakaway Blades for #3209.....	42
1214	ONETIME® 4" X 4" Metal Patch.....	3	3270	Razor Blades - Single Edge (10 per card).....	40
1216	ONETIME® 6" X 6" Metal Patch.....	3	3271/OC	Razor Blades - Single Edge, 5 Blades per Card.....	40
1218	ONETIME® 8" X 8" Metal Patch.....	3	3272	Razor Blades - Single Edge, 100 Blades/Box.....	40
1222	ONETIME® Wall Shield.....	3	3272/BB	Razor Blades - 100 Blades in Plastic Box.....	40
1224	ONETIME® Fiber Mesh Crack Patch Fabric, 36"x75'.....	3	3274	3" Blades for #3241 - Pack of 2 Blades.....	44
1226	ONETIME® Fiber Mesh Crack Patch Fabric, 6"x75'.....	3	3275	Razor Blades - 10 Pack in Safety Dispenser.....	40
1227	ONETIME® Multi-Surface Repair Patch, 2 Pack of 7"x7'.....	3	3276	Glass Scraper Replacement Blade.....	40
1228	ONETIME® Crack Repair Fabric, 2.5"x20'.....	3	3277	4" Blades for #3243 - Pack of 5 Blades.....	44
1710	Glazing Push Points.....	38	3319	Sandpaper Holder-Metal/Rubber Pad.....	37
1722	Glazing Triangle Points.....	38	3710	Graining Tool.....	32
2091	V-Notch Trowel, Soft Grip 1/4" x 1/4" x 3/4".....	45	3930	Paint Can Hook.....	32
2092	V-Notch Trowel, Soft Grip 7/32" x 5/32".....	45	3935	9" Composite Drip-Free™ Caulk Gun.....	34
2093	V-Notch Trowel, Soft Grip 3/16" x 1/4" x 1/2".....	45	3936	9" Half-Barrel Drip-Free™ Caulk Gun.....	34
2105	SLAMSCRAPER® Impact Tool.....	48	3937	13" Ratchet Caulk Gun.....	34
2106	Replacement Blade for SLAMSCRAPER®.....	48	3939	13" Rotating Barrel Caulk Gun.....	33
2107	Short Handle Heavy-Duty Scraper.....	48	3962	Plastic Drop Cloth, 2 mil., 9' x 12'.....	32
2108	Long Handle Heavy-Duty Scraper.....	48	3970	Foam & Fill® Pro Dispensing Gun.....	19
2109	Replacement Blade for #2107 & 2108.....	48	3984	No-Drip Skeleton Caulk Gun.....	33
2430	Multi-Notch Plastic Adh. Spdr 1/8"-3/16"-1/4".....	47	3985	Half-Barrel Caulking Gun, 1/10 gal.....	34
2740	Plastic Mud Pan.....	43	3986	Skeleton Caulk Gun.....	34
2743	Professional Aluminum Pole Sander.....	37	3987	Skeleton Caulk Gun, 1 Quart.....	33
2750	Blue Steel 8" Taping Knife, Cushion Handle.....	43	3988	Revolving Barrel Caulking Gun.....	33
2751	Blue Steel 10" Taping Knife, Cushion Handle.....	43	3989	Extreme Duty 9" Caulking Gun.....	33
2752	Blue Steel 12" Taping Knife, Cushion Handle.....	43	4036	5 Gallon Pail Opener.....	32
2753	Plastic Pole Sander.....	37	4039	Combination 5 Gallon Paint Bucket Opener.....	32
2754	Plastic Hand Sander.....	37	4040	Paint Mixer (1 - 5 Gallon).....	31
3002	2" Carbide Wood Scraper.....	27	4041	Heavy-Duty Mud/Paint Mixer (5 Gallon).....	31
3010	1" Wood Scraper, Single Edge Blade.....	28	4042	Paint (Drill) Mixer.....	31
3012	2" Blade for #3002.....	27	4043	Paint Mixer (5 Gallon).....	31
3015	3" Pole Scraper.....	28	4044	Dual Purpose Window Tool.....	38
3016	3" Bent Pole Scraper.....	28	4045	Utility Patcher.....	47
3040	1-1/2" Wood Scraper.....	28	4047	24" Multi-Purpose Painter's Trim Guard.....	35
3050	2-1/2" Wood Scraper.....	28	4048	9-1/2" Lightweight Painter's Trim Guard.....	35
3061	1" Blade for #3010 & #3010WD.....	28	4049	18" Dual Edge Painter's Trim Guard.....	35
3062	1-1/2" Blade for #3040 & #3040WD.....	28	4050	Scrape 'n Pry Bar - 1-3/4" x 9-5/8".....	35
3063	2-1/2" Blade for #3050 & #3050WD.....	28	4050CL	Classic Scrape 'n Pry Bar.....	35
3110	1" Scraper, Double-Edge Blade.....	27	4052	Caulk Devil® Smoother & Remover.....	31
3140	1-1/2" Heavy-Duty Scraper.....	27	4053	12" Multi-Purpose Painter's Trim Guard.....	35
3150	2-1/2" Heavy-Duty Scraper.....	27	4058	Paint Brush & Roller Cleaner.....	32



Red Devil

ESTABLISHED IN
1872